

**PROGRAMMATIC AGREEMENT
AMONG
THE SMITHSONIAN INSTITUTION
THE DISTRICT OF COLUMBIA STATE HISTORIC PRESERVATION OFFICER
THE NATIONAL CAPITAL PLANNING COMMISSION
THE NATIONAL PARK SERVICE
AND
THE ADVISORY COUNCIL ON HISTORIC PRESERVATION
REGARDING
THE SOUTH MALL CAMPUS MASTER PLAN**

This Programmatic Agreement (PA) is made as of this 31 day of May, 2018, by and among the Smithsonian Institution (SI), the National Capital Planning Commission (NCPC), the District of Columbia State Historic Preservation Officer (DC SHPO), the National Park Service (NPS), and the Advisory Council on Historic Preservation (ACHP) (referred collectively herein as the "Signatories" or individually as a "Party" or "Signatory"), pursuant to Section 106 of the National Historic Preservation Act (NHPA), 54 U.S.C. §§ 306108, and its implementing regulations 36 CFR Part 800, and pursuant to 36 CFR § 800.14(b) authorizing the negotiation of a PA to govern the implementation of a particular program, and resolution of adverse effects from complex project situations or multiple undertakings, regarding the South Mall Campus Master Plan in Washington, DC (Undertaking); and

WHEREAS, for the purposes of this PA, the South Mall Campus is defined by Independence Avenue SW to the south; 12th Street SW to the west; Jefferson Drive SW to the north, and including the Joseph Henry statue and adjacent stair, and the Hirshhorn Museum's Sculpture Garden both located north of Jefferson Drive; and 7th Street SW to the east; and

WHEREAS, the South Mall Campus includes five principal buildings: the Freer Gallery of Art (Freer), the Smithsonian Institution Building (Castle), the Arts and Industries Building (AIB), the Quadrangle Building (Quadrangle), and the Hirshhorn Museum and Sculpture Garden (HMSG); with the Quadrangle housing the Ripley Education Center, Arthur M. Sackler Gallery (Sackler Gallery) and the National Museum of African Art (NMAfA). The Campus includes four designed gardens: the Enid A. Haupt Garden, the Mary Livingston Ripley Garden, the Kathrine Dulin Folger Rose Garden, and the Hirshhorn Museum Sculpture Garden. The Campus also includes subsidiary structures, interstitial landscape, paved circulation paths, and infrastructure, hereinafter referred to as the "Campus" or "Site" (Exhibit A); and

WHEREAS, pursuant to Section 106 of the NHPA federal agencies must take into account the effects of their undertakings on any district, site, building, structure or object that is included in or eligible for inclusion in the National Register of Historic Places (NRHP) and afford the ACHP a reasonable opportunity to comment; and

WHEREAS, pursuant to Public Law 108-72, 117 Stat. 888 (August 15, 2003), for projects in the District of Columbia that are subject to review and approval by the NCPC, the SI is deemed to be a federal agency for purposes of compliance with the regulations pursuant to Section 106 of the NHPA; and

WHEREAS, the NCPC has certain review and approval authority over federal projects located within the District of Columbia pursuant to the National Capital Planning Act of 1952, 40 U.S.C. § 8722(b)(1) and (d); and

WHEREAS, the South Mall Campus Master Plan has been established as an Undertaking subject to the Section 106 process in accordance with 36 CFR § 800.3(a) and as defined in 36 CFR § 800.16(y); and the future design and implementation of each Master Plan project will be considered as an individual undertaking that requires SI to comply with the requirements of the Section 106 consultation process; and

WHEREAS, the SI and NCPC have agreed that SI will be the lead agency pursuant to 36 CFR § 800.2(a)(2) for the Undertaking to fulfill their collective Section 106 responsibilities; and

WHEREAS, all of the historic properties within the Campus are contributing to the National Mall Historic District listed in the NRHP on October 15, 1966 (documented May 19, 1981), and updated in December 2016, and also listed in the District of Columbia Inventory of Historic Sites on November 8, 1964. Additionally, the Castle was designated a National Historic Landmark on January 12, 1965, individually listed in the NRHP on October 15, 1966, and in the DC Inventory on November 8, 1964; the AIB was designated a National Historic Landmark and individually listed in the NRHP on November 11, 1971, and in the DC Inventory on November 8, 1964; and the Freer was individually listed in the NRHP on June 23, 1969, and in the DC Inventory on November 8, 1964. The Freer, Castle, AIB, and the Quadrangle and its gardens are also contributing properties to the Smithsonian Quadrangle Historic District listed in the DC Inventory on April 27, 2017; and

WHEREAS, the SI assembled a Steering Committee drawn from senior leadership, the Board of Regents, Museum Directors, and Smithsonian Gardens, to inform the Master Plan goals, objectives, and priorities; and

WHEREAS, the SI identified the following Institutional goals and objectives to be balanced and achieved by the Master Plan: to preserve and protect the historic buildings and features of the Campus to the greatest extent possible, with priority for the designated NHL buildings; to improve and expand visitor services and education spaces; to create clear accessible entrances and connections between the Museums and gardens of the Campus, the National Mall, and surrounding context; to create an expanded and consolidated central loading facility; and to replace aging building systems that have reached the end of their lifespans with new systems in a centralized mechanical plant that results in significant energy savings and carbon dioxide reduction; and

WHEREAS, the South Mall Campus Master Plan is intended to guide future short-term and long-term renovation and development of the Campus, with projects to be implemented, designed, and constructed over an estimated ten to twenty year period beginning in 2018, and subject to federal appropriations and prioritization of certain projects and phasing; and

WHEREAS, the SI has conducted numerous surveys and evaluations of the Campus and buildings to inform the development of the Master Plan, which have been shared publicly via the project website and in public meetings, including *Existing Conditions Report Smithsonian Institution Building* (April 2009), *Historic Structure Report Smithsonian Institution Building* (December 2009), *Arts and Industries Building Historic Structure Report and Conditions Assessment* (August 2009), *South Mall Campus Cultural Landscape Report* (February 2018), *Determination of Eligibility for the Hirshhorn Museum and Sculpture Garden* (May 2016), and *Determination of Eligibility for the Quadrangle Building* (May 2017); and

WHEREAS, the SI initiated Section 106 consultation with the DC SHPO regarding the Undertaking by letter dated October 9, 2014; and

WHEREAS, the SI and the DC SHPO determined through a Determination of Eligibility (DOE) Form dated May 12, 2016, that the Hirshhorn Museum and Sculpture Garden is eligible for individual listing in the NRHP; and

WHEREAS, on May 26, 2017 the SI requested from the Keeper of the NRHP a formal Determination of Eligibility for listing in the NRHP pursuant to 36 CFR 800.4(c)(2) and 36 CFR § 63 for the Quadrangle Building; and on July 13, 2017, the Keeper of the NRHP determined the Quadrangle Building ineligible for individual listing in the NRHP. On April 27, 2017, the DC Historic Preservation Review Board designated the Smithsonian Quadrangle Historic District a local historic district. The Quadrangle Building is a contributing element of the local historic district. The draft NRHP Nomination for the Quadrangle Historic District prepared by the DC SHPO has not yet been evaluated by the NRHP; and

WHEREAS, in addition to the Signatories, the SI has identified and consulted with other agencies, groups and individuals, and has invited them to participate as Consulting Parties pursuant to 36 CFR § 800.3(f); hereinafter referred to as the “Consulting Parties” (Exhibit B); and

WHEREAS, the SI has provided opportunities for Signatories, Consulting Parties, and public participation in the consultation process through public meetings and a public website (www.southmallcampus.si.edu), which provides a platform for document sharing of historic and technical reports, posting of comments received with SI responses, and webcast and archived presentation material from the public meetings (Exhibit C); and

WHEREAS, the SI and the DC SHPO, in consultation with the Consulting Parties, defined the Area of Potential Effects (APE) roughly bound by 1st Street to the east, 17th Street to the west, Constitution Avenue to the north, C Street and Independence Avenue to the south, and to the south centered along 10th Street. Direct and indirect effects to the identified historic properties within the APE have been considered. The APE, in addition to individual properties, includes the Washington Monument Grounds, U.S. Capitol and Grounds, a portion of the Federal Triangle Historic District, a portion of the Pennsylvania Avenue National Historic Site, and the National Mall Historic District (Exhibit D); and

WHEREAS, pursuant to 36 CFR § 800.5(a) the SI, in consultation with the DC SHPO and the ACHP, have applied the criteria of adverse effect to the various alternative concepts, and have determined that implementation of the South Mall Campus Master Plan will result in adverse effects on historic properties within the Campus and the Area of Potential Effects, as outlined in the *Master Plan Level Assessment of Effects on Historic Properties* (Exhibit E); and

WHEREAS, specific design details are not developed at the master planning level, therefore the *Master Plan Level Assessment of Effects* includes a determination of “potential adverse effect” from certain actions. This determination indicates a potential to create adverse effects from individual or cumulative actions. These effects will be further assessed as part of future Section 106 reviews of individual projects, as required under the terms of this PA; and

WHEREAS, the SI shall reevaluate, revise when appropriate, and finalize all determinations of effect as outlined in the *Master Plan Level Assessment of Effects*, including all “no adverse effect” determinations, through future consultation, with the DC SHPO (at minimum) that involves submittal of detailed drawings, specifications, and additional information as necessary, to document the proposed findings of effect pursuant to 36 CFR Part 800, in accordance with other applicable stipulations of this PA; and

WHEREAS, in accordance with 36 CFR § 800.6(a)(1), the SI has invited the ACHP to participate in consultation by letter dated September 26, 2017, as the Undertaking is likely to result in adverse effects on National Historic Landmarks, and in the preparation of this PA, and the ACHP has elected to participate in the consultation pursuant to 36 CFR § 800.6(a)(1)(iii); and

WHEREAS, pursuant to 36 CFR § 800.10(c) the SI invited the Secretary of the Interior (the “Secretary”) to participate in consultation by letter dated September 26, 2017, since the Undertaking is likely to result in adverse effects on National Historic Landmarks, and the National Park Service has represented the Secretary concerning the NHLs within the Campus throughout consultation and will continue to participate in future consultations involving the National Historic Landmarks; and

WHEREAS, certain Master Plan components may require work of a temporary or permanent nature within areas under the jurisdiction of the NPS, which require NPS to issue a special use permit. The SI acknowledges that permits and coordination with the NPS will be required for the implementation of these undertakings. NPS may or may not choose to make use of the consultation process outlined in this PA to fulfill its Section 106 responsibilities associated with the issuance of the necessary permits; and

WHEREAS, this PA includes provisions which allow other federal agencies to use the terms of this PA to fulfill their Section 106 responsibilities for undertakings relating to the South Mall Campus Master Plan; and

WHEREAS, the NCPC, conducted public meetings to review the Master Plan at informational briefings on April 7, 2016, and September 7, 2017; and the Commission reviewed and commented favorably on the concept Master Plan on January 4, 2018, and on the draft Master Plan on April 5, 2018 (Exhibit F); and

WHEREAS, the Commission of Fine Arts in its meeting on April 19, 2018, reviewed the proposed South Mall Campus Master Plan Alternative F and approved the plan as a basis for proceeding with the design of the plan’s components (Exhibit G); and

WHEREAS, the SI has considered information provided by the public in the development of both the Section 106 and National Environmental Policy Act (NEPA) review processes; considered and responded to Signatories and Consulting Parties’ comments; posted meeting minutes, comments, and responses on the project website; incorporated some consulting parties’ comments in developing the Master Plan alternatives; and provided for public involvement in this PA at a Consulting Parties meeting on May 9, 2018; and

WHEREAS, on November 17, 2017, the SI and NCPC released the *South Mall Campus Master Plan Draft Environmental Impact Statement* (EIS) pursuant to the NEPA for a 60-day public comment period; and released the *South Mall Campus Master Plan Final Environmental Impact Statement* on April 20, 2018, for a 30-day public review period. The draft EIS and final EIS analyzed the potential impacts that the Undertaking may have on the natural and man-made environment; and

WHEREAS, through the NEPA process and Section 106 consultation, the SI has identified Alternative F as its preferred alternative because SI believes it balances accomplishing the Master Plan goals and objectives and the SI’s purpose and need, with adverse effects on historic properties; results in the least cumulative adverse impacts on the environment; places a top priority for the restoration of the

designated National Historic Landmark buildings; improves Campus-wide infrastructure, circulation, and utilities; and increases landscaped areas, and improves vistas and connections to the National Mall; and

WHEREAS, the SI obtained conceptual approval from the District of Columbia Public Space Regulation Administration on January 26, 2018, for the curb cut and driveway for the consolidated loading facility entrance located to the west of the Freer, and will apply specific mitigations and traffic signal safety coordination in consultation with the District Department of Transportation, as well as comply with the terms of this PA for the curb cut and associated loading ramp; and that the SI will return to the DC Public Space Regulation Administration for final approval; and

WHEREAS, the SI intends to pursue the Undertaking in accordance with Master Plan Alternative F (Exhibit H) and this PA to accomplish the SI's purpose and need; and

WHEREAS, NCPD reviewed the Draft Master Plan on April 5, 2018, and as the lead federal agency for the purposes of NEPA, supported the SI's Alternative F as the basis of the campus master plan and the preferred alternative identified in the Final Environmental Impact Statement; and provided comments related to historic properties on the campus, including the National Historic Landmarks, noting that a Programmatic Agreement would be developed to describe the steps and process to further avoid, minimize and mitigate adverse effects, as individual project designs are developed (Exhibit F); and

WHEREAS, through Section 106 consultation, the DC SHPO, NPS, and some Consulting Parties expressed a preference for Alternative B, and concerns and opposition to aspects of the alternatives that would result in adverse effects on historic properties resulting from, and not necessarily limited to the following actions: excavation beneath the Castle; altering the flat grade and other character-defining features of the Haupt Garden; the demolition of the Ripley Pavilion; the demolition of the Sackler and NMAfA Pavilions; the construction of new museum pavilions closer to the Castle and the National Mall; and related actions that diminish the integrity of historic properties; and

WHEREAS, through the NEPA and Section 106 processes, public comments were sought on all of the alternatives, and public opposition was received on aspects of the Master Plan alternatives that would adversely affect historic properties including online petitions, letters, public statements, and testimony, particularly in reference to impacts on the Haupt Garden; and

WHEREAS, during Section 106 consultation, certain features of the alternatives under consideration were identified as significant adverse effects on historic properties, specifically: the sloped plane of the Haupt Garden to the below grade entrance to the Visitor Center amenities, substantial excavation beneath the Castle, and the removal of the majority of the Hirshhorn plaza walls. Alternative F incorporates measures to minimize some of the adverse effects by maintaining the grade of the Haupt Garden, limiting the depth and footprint of excavation beneath the Castle, and retaining the majority of the Hirshhorn plaza walls; and

WHEREAS, the DC SHPO, NPS, and some Consulting Parties intend to continue to advocate for a rehabilitation approach during future project design, and for the consideration of designs or other alternatives similar to Alternative B that could avoid and further minimize adverse effects on historic properties; and

WHEREAS, the SI will continue to provide opportunities for ongoing public involvement in the development of this Undertaking as each individual project is designed and implemented in accordance

with the Master Plan, in accordance with the terms of this PA which provides a framework for subsequent Section 106 consultation with the Signatories, Consulting Parties, and the public; and

WHEREAS, to the maximum extent feasible, project design and alterations to buildings within the Campus will be consistent with the *Secretary's Standards for the Treatment of Historic Properties with Guidelines for Preserving, Rehabilitating, Restoring & Reconstructing Historic Buildings* and *Guidelines for the Treatment of Cultural Landscapes*; to preserve historic building fabric and landscape character; to be compatible with historic structures using design and materials compatible with the settings and environment; new additions with limited above-grade impact to historic buildings and settings; and the least amount of damage or alteration to the historic fabric possible while providing functional occupancies meeting the programmatic requirements of the Master Plan; and

WHEREAS, like all the alternatives, Alternative F provides significant opportunities for restoration and stewardship of the buildings within the Campus, including addressing exterior envelopes and upgrading building systems, restoration work for the exterior and interior of the Castle, with opportunities to restore the Great Hall, Upper Great Hall, Children's Room, and basement vaults; and

WHEREAS, the SI recognizes the need to further avoid, minimize, and mitigate adverse effects during future project design, particularly with regard to the Quadrangle Museum pavilions, the Visitors Center entrance, Castle basement excavation and seismic protection, replacement of the Quadrangle roof membrane and treatment of the Haupt Garden, and treatment of the Hirshhorn Museum Sculpture Garden, and will continue consultation with the Signatories, Consulting Parties, and the public in accordance with the terms of this PA; and that the cumulative adverse effects from the full implementation of the Master Plan will require reassessment as each project is addressed under Section 106 consultation; and

WHEREAS, pursuant to the consultation conducted under 36 CFR § 800.14(b), the Signatories have developed this PA to take into account the adverse effects of the Undertaking on historic properties, identify means to avoid, minimize and mitigate the adverse effects, and establish procedures to continue consultation to resolve any unknown, known, and future adverse effects that may result from the design and implementation of the South Mall Campus Master Plan; and

WHEREAS, the purpose of this PA is to ensure compliance with Section 106 and the principles of the NHPA, whereby SI will conduct consultation for the implementation and design of each phase of the Master Plan, and, prior to any effort that may directly or indirectly affect historic properties, shall, to the greatest extent possible, undertake planning and design actions as necessary to avoid or minimize adverse effects and shall afford the DC SHPO and the ACHP reasonable opportunity to comment; and

WHEREAS, the Signatories acknowledge that Section 106 consultation regarding the development of the South Mall Campus Master Plan itself has concluded with the execution of this PA;

NOW, THEREFORE, the Signatories agree that implementation of the South Mall Campus Master Plan shall be carried out in accordance with the following stipulations in order to take into account and avoid, minimize, and mitigate the adverse effects of the South Mall Campus Master Plan on historic properties.

STIPULATIONS

The SI shall ensure that the following measures are carried out:

ON-GOING AND FUTURE CONSULTATION

The general site plans, sections, and renderings included in Exhibit H illustrate Alternative F current as of the date of the last signature on this PA. Additional consultation will be required for each project developed for the implementation of the South Mall Campus Master Plan. As each project is designed, there is potential for unidentified adverse effects and for previously identified adverse effects as outlined in the *Master Plan Level Assessment of Effects* (Exhibit E) to be intensified. Therefore, the SI shall continue to consult with the Signatories, Consulting Parties, and the public, and take their comments into account in accordance with this PA and 36 CFR Part 800 as follows:

1. Preliminary Project Consultation

Early in the design development of each project, the SI will initiate preliminary consultation with the Signatories regarding the proposed designs for buildings or site changes, and will incorporate comments provided into the design to the greatest extent feasible, in light of the project's goals and objectives and this PA. This early consultation will be centered around in-person group meetings, and will occur during the schematic phase of design development or pre-submission phase consistent with the NCPC Submission Guidelines, and before 15% design development drawings.

- A. The SI will work with the Signatories to define the scope of the project(s), preliminarily assess adverse effects, develop and/or update the Consulting Parties list, and define the formal Section 106 consultation schedule and level of effort as they relate to the proposed project(s). Specifically, the SI will work with the Signatories to determine whether consulting party meetings will be required, and if so, outline a meeting schedule dependent upon the level of complexity of the project. If any Signatory believes a consulting party meeting(s) is/are necessary because a project is likely to result in an adverse effect, the SI shall agree to conduct such a meeting(s).
- B. Re-evaluation of Historic Significance. Due to the extended timeframe of the Master Plan, the SI will consult early with the Signatories to re-evaluate the historic significance of properties or landscapes that may have changed over time. The SI shall conduct a Consulting Parties meeting as appropriate.
- C. DC Historic Preservation Review Board (HPRB) Review: The DC SHPO may refer future South Mall Campus Master Plan projects to the HPRB for review and comment at any time during Preliminary Consultation or Section 106 Consultation. The SI shall cooperate with the DC SHPO to provide all necessary documentation and schedule any such HPRB hearings and shall consider any HPRB comments in the development of project review and plans.
- D. Coordination and Consultation with NPS: The SI will consult early with the NPS regarding any project with the potential to affect the two NHL buildings, and/or any project that will impact historic properties on NPS park lands or under NPS jurisdiction. In addition, when a project will require work on NPS land, the SI will coordinate early with the NPS to determine if special use permits or short term construction permits must be issued, and whether NPS will use this PA to

fulfill its Section 106 responsibilities. If NPS chooses not to use this PA, the NPS will notify the Signatories and will conduct a separate Section 106 review. Should the undertaking be determined to be a streamlined activity as defined in the 2008 NPS Programmatic Agreement with the ACHP and the National Conference of State Historic Preservation Officers, the Signatories will not be notified and the typical streamlined NPS Section 106 review process will be followed.

2. Section 106 Consultation Process and Procedures

Implementation of the South Mall Campus Master Plan will be carried out over a period of an estimated ten (10) to twenty (20) years, with each project designed within the framework outlined in Alternative F and in this PA. The SI shall reevaluate, seek comments from the Signatories and Consulting Parties, revise when appropriate, and finalize all determinations of effect as outlined in the *Master Plan Level Assessment of Effects*, including all “no adverse effect” determinations, through future consultation. The design and implementation of each project will undergo a separate and substantive Section 106 review and consultation process pursuant to this PA:

- A. Initiating Consultation: After the development of a schematic design and preliminary project consultation in accordance with Stipulation 1, the SI will formally initiate consultation with the DC SHPO and the Signatories via letter and notify the Consulting Parties through one of the following: provide information via email, and develop a project specific website or post the information to the SI’s Office of Architectural History and Historic Preservation website.
- B. Nature of Consultation: Based upon the results of preliminary project consultation carried out in accordance with Stipulation 1, the SI shall provide sufficient time for a Consulting Parties’ Meeting or Meetings to occur, if necessary, before making a determination of effect in accordance with Stipulation 2.C.
- C. Assessment of Effect: Based upon early consultation conducted in accordance with Stipulation 1 above, the SI shall apply the criteria of adverse effect in consultation with the DC SHPO and determine if the project(s) will result in “No Historic Properties Affected”, “No Adverse Effect”, or “Adverse Effect” on historic properties within the Area of Potential Effects (Exhibit D). Such determinations will be based upon the submission of up-to-date and detailed plans, drawings, specifications and additional information necessary to make final determinations of effect.
 - i. No Historic Properties Affected: All of the buildings in the South Mall Campus are historic properties, but there may be specific projects that will have no effect on said historic properties. If the SI reaches a determination of “No Historic Properties Affected”, the SI will notify the Signatories in writing, provide sufficient project documentation to support its determination, and request concurrence. The SI shall simultaneously provide the project documentation and determination to the Consulting Parties through one of the following: provide information via email,

develop a project specific website, or post the information to the SI's Office of Architectural History and Historic Preservation website.

- a. The Signatories and Consulting Parties shall have thirty (30) days from receipt/posting of an adequately documented submission to review and comment on the determination. The DC SHPO shall have an additional fifteen (15) days to review and comment to take into account the comments of Consulting Parties and other Signatories.
 - b. If there are no objections to the determination within the specified timeframes, the SI may move forward with the project as proposed. Any objections shall be addressed in accordance with Stipulation 13 (Dispute Resolution).
- ii. Determination of No Adverse Effect: If the SI determines a project will result in "No Adverse Effect," it will notify the Signatories in writing, provide sufficient project documentation to support its determination, and request concurrence. The SI shall simultaneously provide the project documentation and determination to the Consulting Parties through one of the following: provide information via email, develop a project specific website, or post the information to the SI's Office of Architectural History and Historic Preservation website.
- a. The Signatories and Consulting Parties shall have thirty (30) days from receipt/posting of an adequately documented submission to review and comment on the determination. The DC SHPO shall have an additional fifteen (15) days to review and comment to take into account the comments of Consulting Parties and other Signatories. If there are no objections to the determination, the SI may move forward with the project as proposed.
 - b. If a Consulting Party responds that it does not concur with the determination of "No Adverse Effect," the SI will notify the Signatories, consider the Consulting Party comments and consult with all parties to resolve the disagreement. Any disagreement with a Consulting Party that cannot be resolved shall be addressed in accordance with Stipulation 13.B of this PA. If any Signatory responds that it does not concur with the determination of "No Adverse Effect," the SI will consult with the Signatories to attempt to resolve the disagreement.
 - c. If the disagreement cannot be resolved, the SI will refer its determination to the ACHP per 36 CFR 800.5(c)(3)(i) to determine whether the adverse effect criteria have been correctly applied. If the ACHP determines that the project will have "No Adverse Effect," the SI may proceed with its project accordingly. If the ACHP

determines that the project may result in an “Adverse Effect,” the SI will consider whether further consultation is required under 2.C.iii.

- iii. Determination of Adverse Effect: If the SI determines a project will result in an “Adverse Effect,” including any previously unidentified, intensified or cumulative “Adverse Effects,” it will notify the Signatories in writing, provide sufficient documentation to support its determination; share the determination via email, post each project submittal and determination to a specific project website, or post the information to the SI’s Office of Architectural History and Historic Preservation website for Consulting Party review, and consult further with the Signatories and Consulting Parties to seek ways to avoid the “Adverse Effect”, prior to considering mitigation measures.
 - a. The Signatories and Consulting Parties shall have thirty (30) days from receipt/posting of an adequately documented submission to review and comment on the determination. The DC SHPO shall have an additional fifteen (15) days to review and comment to take into account the comments of Consulting Parties and other Signatories. These review periods will occur prior to conducting a Consulting Parties meeting.
 - b. If all parties agree that avoidance is possible, SI will modify its plans accordingly, document the finding with the DC SHPO, and implement the project(s) in the manner that avoids the “Adverse Effect(s).”
 - c. If avoidance is not possible, SI shall consult further with the Signatories and Consulting Parties to identify ways to minimize or mitigate the “Adverse Effect(s).” Agreed upon minimization and mitigation measures shall be formalized in Memoranda of Agreement (MOA) executed pursuant to 36 CFR 800.6. Any disagreement regarding “Adverse Effect” determinations shall be referred to the ACHP per Stipulation 13 (Dispute Resolution).

3. Notification for the Continuing Involvement of Consulting Parties and the Public

Consulting Parties and the public will continue to have the opportunity to comment on each project for the implementation of the South Mall Campus Master Plan during Section 106 consultation pursuant to this PA.

- A. At the initiation of each Section 106 consultation, the SI shall consult with the DC SHPO and the Signatories to update and expand the Consulting Parties list as suggested.
- B. The SI shall provide project documentation and determinations of effect to the Consulting Parties and public through one of the following:
 - i. Provide project documentation and determinations of effect via email.

- ii. Develop a project specific website, and post all project information to the website, with notification to the Consulting Parties as information is posted.
 - iii. Post project information to the SI's Office of Architectural History and Historic Preservation website, with notification to the Consulting Parties as information is posted.
- C. The SI will establish a schedule for project specific Section 106 consultation with critical dates and identified opportunities for providing input in accordance with Stipulation 1. The SI will keep the Consulting Parties and the public informed of the established schedule via one of the formats outlined in Stipulation 3.B.

4. MODIFICATIONS TO THE MASTER PLAN

Due to the extended timeframe for design and implementation of the South Mall Campus Master Plan, modifications to the Master Plan may be necessary. NCPC will determine after preliminary consultation with the SI when a project or a change to a project requires an amendment or update to the Master Plan in accordance with the NCPC's submission guidelines.

The SI will consult with the Signatories and Consulting Parties on any amendment/modification to the Master Plan in accordance with Stipulation 1 (Preliminary Project Consultation), 2 (Section 106 Consultation and Procedures), and 3 (Notification for the Continuing involvement of Consulting Parties and the Public). Notice will be provided to the Signatories and Consulting Parties of any submissions to NCPC for review and approval of the Master Plan amendment/modification.

5. MINIMIZATION MEASURES FOR ALTERNATIVE F

The following measures, which were concessions made and agreed upon during Section 106 consultation to minimize adverse effects on historic properties, shall be applied and incorporated into associated designs, as appropriate, and serve as a starting point for future Section 106 consultation in accordance with Stipulation 2:

- A. Reduction of Campus Excavation: Excavation beneath the Castle will be limited to the consolidated loading facility located beneath the West Wing and Range, to increase the ceiling height of the Castle basement level, and excavation below the basement level to accommodate utility distribution, footings, and seismic measures. Excavation beneath the Castle will not exceed the extents outlined in Alternative F.
- B. Hirshhorn Museum and Sculpture Garden:
 - i. The Hirshhorn plaza aggregate concrete walls will be maintained and restored. Alterations will be limited to minimal changes to the west wall, including the removal of the non-historic accessible ramp and opening, and removal of a select portion of the wall to connect with the main east-west Campus circulation route and to the central door on the AIB's east elevation.

- ii. The Sculpture Garden will maintain a depressed elevation, below the grade of the National Mall. The Sculpture Garden will maintain its current footprint, and the aggregate concrete perimeter walls will be restored.
- C. Preservation, Repair, and Rehabilitation: All future preservation, repair, and rehabilitation efforts will be carried out in accordance with the NHPA, and the *Secretary of the Interior's Standards with Guidelines for Preserving, Rehabilitating, Restoring & Reconstructing Historic Buildings* and *Guidelines for the Treatment of Cultural Landscapes*.

6. SPECIFIC MITIGATION MEASURES

The SI shall ensure that mitigation measures commensurate with final adverse effect determinations made pursuant to this PA shall be identified in future consultation with the Signatories and Consulting Parties and implemented in accordance with individual project Memoranda of Agreement. It is understood that the following measures are a starting point for future consultation, and are not necessarily sufficient to adequately mitigate all adverse effects that may result from implementation of the South Mall Campus Master Plan, including any adverse effects which may have been previously unidentified and any which may be intensified and/or cumulative. At a minimum, these mitigation measures shall include nominating historic properties to the NRHP and updating existing NRHP nominations and NHL documentation, as appropriate. The following documentation and recordation mitigation measures shall be initiated within five (5) years of the last signature on this PA to allow time to allocate funding:

- A. HABS/HALS Recordation of the Quadrangle and Haupt Garden: The SI shall use Historic American Building Survey/Historic American Engineering Record/Historic American Landscape Survey (HABS/HAER/HALS) Level 3 standards to document the Ripley Pavilion, Sackler Gallery Pavilion, African Art Pavilion, Haupt Garden, and associated Garden structures including the Moongate Garden, Fountain Garden, Downing Urn, and the Renwick Gates. The documentation will include exterior and interior photographs and measured drawings prior to any construction or implementation of the Master Plan. Documentation will be submitted for inclusion in the HABS/HAER/HALS collection.
- B. HABS/HALS Recordation of the Hirshhorn Museum and Sculpture Garden: The SI shall use Historic American Building Survey/Historic American Engineering Record/Historic American Landscape Survey (HABS/HAER/HALS) Level 3 standards to document the Hirshhorn Museum and Sculpture Garden. The documentation will include exterior photographs prior to any construction or implementation of the Master Plan. Documentation will be submitted for inclusion in the HABS/HAER/HALS collection.
- C. National Register Nomination for the Hirshhorn Museum and Sculpture Garden: The SI will complete an individual National Register of Historic Places Nomination for the Hirshhorn Museum and Sculpture Garden. The Nomination shall be completed by an individual or individuals meeting Stipulation 11, and carried out in consultation with the DC SHPO.
- D. Update the National Register Nomination for the Freer Gallery of Art: The SI will update the existing individual National Register of Historic Places Nomination for the Freer Gallery of Art. The Nomination shall be completed by an individual or individuals meeting Stipulation 11, and carried out in consultation with the DC SHPO.

- E. Updates to National Historic Landmark Documentation: The SI will update the existing National Historic Landmark documentation for the Smithsonian Institution Building (Castle) and the Arts and Industries Building. The documentation will be completed by an individual or individuals meeting Stipulation 11, and carried out in consultation with the National Historic Landmarks Program of the National Park Service.

7. IMPLEMENTATION OF PROJECTS

The Master Plan will be constructed in phases over an estimated ten (10) to twenty (20) year period. The SI will ensure that the following measures will be carried out in association with the implementation and construction of the Master Plan projects:

- A. Design and Construction Phasing. The Master Plan projects will be designed and implemented as funding becomes available. Top priority will be given to the restoration of the Castle and the related seismic retrofit. An anticipated commencement and phased implementation approach to the Master Plan is outlined in Exhibit I. This anticipated schedule is subject to change; any schedule changes will be communicated to the Signatories.
- B. Required Federal Agency Reviews. The Signatories will be informed of the outcomes of formal reviews by the NCPC, Commission of Fine Arts, and the DC SHPO, per annual reporting under Stipulation 10. Upon request, the SI will provide requesting Signatories a copy of the project materials submitted to the agency pursuant to the associated review.
- C. Monitoring of Adjacent Historic Properties. To ensure that the construction and implementation of the South Mall Campus Master Plan does not harm the stability of the Castle, AIB, and Freer, the SI will complete extensive baseline information to document pre-construction conditions and will develop a Monitoring Plan that requires SI to install, prior to the testing phase, vibration and monitoring devices to be used during testing and all phases of construction. Testing and construction shall be temporarily halted should any vibration, noise, settlement or unanticipated circumstances exceed the safe limits outlined in the Monitoring Plan. Work shall resume only after remediation and consultation with the Signatories.
- D. Campus Circulation. The SI will endeavor to maintain pedestrian access and circulation through the landscaped areas of the Campus as much as is practical during construction.
- E. Arts and Industries Building. The Master Plan facilitates the mechanical and loading infrastructure to enable the interim use and/or permanent use of the AIB for general modifications, public exhibitions, educational programming, and special events. The AIB will continue to function as a flexible event and exhibition space, and will house a temporary Visitor's Center during the Castle renovation, until a permanent use is identified and funding comes available. The SI shall notify the Signatories and seek comments on design modifications required to enable permanent use of the AIB in accordance with this PA.
- F. Interpretive Signage Related to Construction. The SI shall prepare interpretive exhibits to be in place at the start of construction on each project. The exhibit will provide summary

information on the history of the associated building and the relationship of the project to the Master Plan. The nature of the exhibits will be flexible, based upon individual projects' construction related closures, and is intended to educate the public about construction activities.

- G. Maintenance of Website: The SI will maintain the South Mall Campus Master Plan website until the first Master Plan project is implemented. The SI will continue to post ongoing project implementation studies, such as seismic upgrades and structural protection plans for excavation work, during this interim period. After this period, the website will redirect users to the SI's Office of Architectural History and Historic Preservation, where the materials from the South Mall Campus Master Plan website will be relocated, and where they will remain accessible to the public. The SI will publicize future Section 106 consultation on design projects for the implementation of the Master Plan in accordance with Stipulations 2 and 3.

8. EMERGENCY ACTIONS

Emergency actions are those actions deemed necessary by the SI as an immediate and direct response to an emergency situation. Provisions of this PA shall not restrict or otherwise impede the SI from taking immediate actions deemed necessary as an immediate and direct response to an emergency situation, to protect life and property, detect or otherwise respond to a credible terrorist threat or attack upon the Campus, or to address an emergency condition resulting from construction. Emergency actions under this PA are only those implemented within thirty (30) calendar days from the initiation of the emergency situation.

- A. If the emergency action has the potential to affect historic properties, the SI shall notify the DC SHPO, Signatories, and other relevant parties as appropriate, prior to undertaking the action, when feasible. As part of the notification, SI shall provide a plan to address the emergency. The DC SHPO shall have seven (7) calendar days to review and comment on the plan to address the emergency. If the DC SHPO does not comment or does not object to the plan within the review period, SI shall implement the proposed plan.
- B. If the SI is unable to consult prior to carrying out emergency actions, SI shall notify the DC SHPO, Signatories, and other parties as appropriate, within forty-eight (48) hours after the initiation of the emergency action. This notification shall include a description of the emergency action taken, the effects of the action(s) to historic properties, and, where appropriate, any further proposed measures to avoid, minimize, or mitigate potential adverse effects to historic properties. The DC SHPO shall have seven (7) calendar days to review and comment on the proposal where further action is required to address the emergency. If the DC SHPO does not comment or does not object to the plan within the review period, the SI shall implement the proposed plan.
- C. Where possible, such emergency actions shall be undertaken in a manner that does not preclude future preservation or restoration of historic properties.
- D. Immediate rescue and salvage operations conducted to preserve life or property are exempt from these and all other provisions of this PA.

9. POST-DESIGN REVIEW ARCHAEOLOGICAL DISCOVERIES

The Campus has been extensively disturbed by the construction of the existing buildings, therefore, there is minimal potential for archaeological resources that are listed in or eligible for listing in the National Register to be disturbed. The following stipulations, however, outlines the manner in which previously undiscovered archaeological resources will be reviewed if they are discovered:

- A. Cultural Resources. Should cultural resources be unexpectedly identified during the implementation of the Master Plan or any actions taken pursuant to this PA, the SI shall ensure that reasonable efforts are made to avoid, minimize or mitigate adverse effects to such resources, and shall consult with the DC SHPO to resolve any unavoidable adverse effects pursuant to 36 CFR § 800.6. SI and DC SHPO shall resolve any disputes over the evaluation or treatment of previously unidentified resources using the processes outlined in Stipulation 2 of this PA.
- B. Treatment of Human Remains. In the event that human remains, burials, or funerary objects are discovered during construction or any action taken pursuant to this PA, the SI shall immediately halt subsurface construction disturbance in the area of the discovery and in the surrounding area where additional remains can reasonably be expected to occur. The SI shall immediately notify the DC SHPO and the District of Columbia Chief Medical Examiner (CME) of the discovery under DC Code Section 5-1406 and other applicable laws and regulations.
 - i. If CME determines that the human remains are not subject to a criminal investigation by federal or local authorities, SI shall comply with the applicable federal or local laws and regulations governing the discovery and disposition of human remains and consider the ACHP's Policy Statement Regarding Treatment of Burial Sites, Human Remains, and Funerary Objects (2007).
 - ii. For actions involving Native American human remains or burials, SI shall comply with applicable laws. in accordance with provisions of the Native American Graves Protection and Repatriation Act, as amended (Public Law 101-601, 25 USC 3001 et seq.), and regulations of the Secretary of the Interior at 43 CFR Part 10. Should human remains or such objects be found, the DC SHPO shall be notified pursuant to 43 CFR Section 10.4(d).

10. MONITORING AND REPORTING

Each year, until the PA expires or is terminated, the SI shall provide the Signatories with a summary report detailing work undertaken pursuant to its terms, or a statement of "no activity". The report will be issued annually on or before July 31st. The report will summarize the efforts carried out during the prior year, updates on current Section 106 consultation processes, current construction activities, fiscal year budget allocations, status or completion of mitigation measures, and any projects planned for the coming year. The SI shall convene a meeting to discuss the information contained in the annual report as required, or when requested by a Signatory. Failure to provide such summary report may be considered noncompliance with the terms of the PA pursuant to the Amendments and Non-Compliance stipulation of this PA.

11. QUALIFICATIONS

SI shall ensure that all historic preservation and/or archaeological work performed on its behalf pursuant to this PA shall be accomplished by, or under the direct supervision of a person or persons who meet(s) or exceed(s) the pertinent qualifications in the Secretary's Professional Standards (Archaeology and Historic Preservation: Secretary of the Interior's Standards and Guidelines [As Amended and Annotated]), formerly located at 36 CFR Part 61 in those areas in which the qualifications are applicable for the specific work performed.

12. ANTI-DEFICIENCY ACT

The SI's obligations under this PA are, in part, subject to the availability of appropriated funds, and the stipulations of this PA are subject to the provisions of the Anti-Deficiency Act. The SI shall make reasonable and good faith efforts to secure the necessary funds to implement its obligations under this PA. If lack of funds alters or impairs compliance with the Anti-Deficiency Act and the SI's ability to implement its obligations under this PA, the SI shall consult in accordance with Stipulation 14 (Amendments to the PA and Non-Compliance), and if necessary, the Stipulation 16 (Termination).

13. DISPUTE RESOLUTION

A. Dispute Resolution for Signatories: Should any Signatory to this PA object at any time to any action proposed or the manner in which the terms of this PA are being implemented, the SI shall consult with such party and the other Signatories to resolve the objection. If a resolution cannot be reached after a good faith effort to resolve the dispute has been carried out, the SI shall forward all documentation relevant to the dispute to the ACHP including the SI's proposed response to the objection. Within 45 days after receipt of all pertinent documentation, the ACHP shall exercise one of the following options:

- i. Advise the SI that the ACHP concurs with the SI's proposed response to the objection;
- ii. Provide the SI with recommendations, which the SI shall take into account in reaching a final decision regarding its response to the objection; or
- iii. Notify the SI that the objection will be referred for comment pursuant to 36 CFR 800.7(c), and proceed for comment. The resulting comment shall be taken into account by the SI in accordance with 36 CFR 800.7(c)(4) with reference to the dispute.

The SI shall take into account any ACHP recommendation or comment provided in accordance with this stipulation with reference only to the subject of this objection; the SI's responsibility to carry out actions under this PA that are not subjects of the objection shall remain unchanged.

Should the ACHP not exercise one of the above options within 45 days after receipt of all documentation, the SI may assume the ACHP's concurrence in its proposed response to the objection.

B. Public Dispute Resolution: A Consulting Party or member of the public may object in writing to the SI, with copies to the other Signatories and Consulting Parties, regarding any action

proposed to be carried out with respect to the implementation of the Master Plan and the PA. The SI shall take the objection into account and may consult with the objecting party, and other Consulting Parties, the public, and Signatories to resolve the dispute. The SI shall then respond to the objecting party in writing, with copies to the Signatories and other Consulting Parties. If the SI subsequently determines that the objection cannot be resolved through consultation, the SI shall notify the objecting party, the DC SHPO, and the ACHP which of the following options it will exercise:

- i. Seek the assistance of the ACHP in resolving the objection in accordance with Stipulation 13.A.i-iii; or
- ii. Provide a formal written response to the objection within thirty (30) days of notice to the objecting party and provide the Signatories and other Consulting Parties with copies of the written response.

14. AMENDMENTS TO THE PA AND NON-COMPLIANCE

If an amendment to the PA is required, the Signatories will consult on the proposed amendment. This PA may be amended when such an amendment is agreed to in writing by all Signatories. The amendment will be effective on the date a copy signed by all the Signatories is filed with the ACHP. The original amendment will be filed with the ACHP. If the Signatories cannot agree to appropriate terms to amend the PA, any Signatory may terminate the PA in accordance with Stipulation 15.

15. TERMINATION

If any Signatory to this PA determines that its terms cannot or are not being properly implemented, that Signatory shall immediately consult with the other Signatories to attempt to resolve the dispute or develop an amendment per Stipulations 13 and 14 above. If within sixty (60) days (or another time period agreed to by all Signatories) an amendment cannot be reached, any Signatory may terminate the PA upon written notification to the other Signatories.

Once the PA is terminated, and prior to work continuing on the Undertaking, SI must either (a) execute a new PA or MOA pursuant to 36 CFR § 800.14(b) or 800.6, or (b) reinstate Section 106 consultation on the unfinished components of the Undertaking pursuant to 36 CFR Part 800. SI shall notify the Signatories as to the course of action it will pursue.

16. COORDINATION WITH OTHER FEDERAL REVIEWS

If the Smithsonian receives a written request from a federal agency or other organization to meet their Section 106 responsibilities for undertakings relating to implementation of the South Mall Campus Master Plan by adopting the terms of this PA, the SI shall notify the Signatories for consideration of the request(s). If all Signatories agree, the requesting agency or agencies may do so by an amendment carried out pursuant to Stipulation 14 of this PA.

17. DURATION

This PA shall be in effect for twenty-five (25) years from the date of the last signature on this PA. If necessary, the duration of this PA may be modified provided that all Signatories agree in writing.

Execution of this PA by the Signatories and implementation of its terms evidence that the SI has taken into account the effects of this Undertaking on historic properties and afforded the ACHP a reasonable opportunity to comment with regard to the Undertaking.

18. ELECTRONIC COPIES

Within one week of the last signature on this PA, the SI shall provide each Signatory with one legible, color, electronic copy of the fully executed PA and all of its attachments fully integrated into one, single document. Internet links shall not be used as a means to provide copies of attachments since web-based information can change. If the electronic copy is too large to send by e-mail, the SI shall provide each signatory with a copy of this PA on a compact disc.

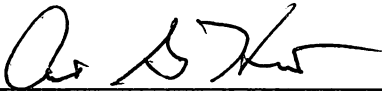
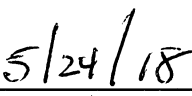
SIGNATURES AND EXHIBITS FOLLOW ON SEPARATE PAGES

EXHIBITS

- Exhibit A – South Mall Campus Site Plan
- Exhibit B – Invitees to Scoping and Consulting Parties Meetings
- Exhibit C – List of Consulting Parties Meetings
- Exhibit D – Area of Potential Effects
- Exhibit E – Master Plan Level Assessment of Effects on Historic Properties
- Exhibit F – Comments from the National Capital Planning Commission
- Exhibit G – Final Comments from the Commission of Fine Arts
- Exhibit H – South Mall Campus Master Plan Alternative F
- Exhibit I – Design and Construction Phasing

SIGNATURE PAGE
PROGRAMMATIC AGREEMENT
REGARDING
THE SOUTH MALL CAMPUS MASTER PLAN

FOR THE SMITHSONIAN INSTITUTION

By:   _____

Albert G. Horvath
Under Secretary for Finance and Administration

Date

SIGNATURE PAGE

PROGRAMMATIC AGREEMENT
REGARDING
THE SOUTH MALL CAMPUS MASTER PLAN

FOR THE DISTRICT OF COLUMBIA STATE HISTORIC PRESERVATION OFFICER

By: David Maloney 5/29/2018

David Maloney Date
State Historic Preservation Officer, District of Columbia

SIGNATURE PAGE
PROGRAMMATIC AGREEMENT
REGARDING
THE SOUTH MALL CAMPUS MASTER PLAN

FOR THE NATIONAL CAPITAL PLANNING COMMISSION

By: Marcel C. Acosta 5/30/2018

Marcel C. Acosta
Executive Director

Date

SIGNATURE PAGE

**PROGRAMMATIC AGREEMENT
REGARDING
THE SOUTH MALL CAMPUS MASTER PLAN**

FOR THE NATIONAL PARK SERVICE

By:  5/30/16

Robert Vogel
Regional Director, National Capital Region

Date

SIGNATURE PAGE

PROGRAMMATIC AGREEMENT
REGARDING
THE SOUTH MALL CAMPUS MASTER PLAN

FOR THE ADVISORY COUNCIL ON HISTORIC PRESERVATION

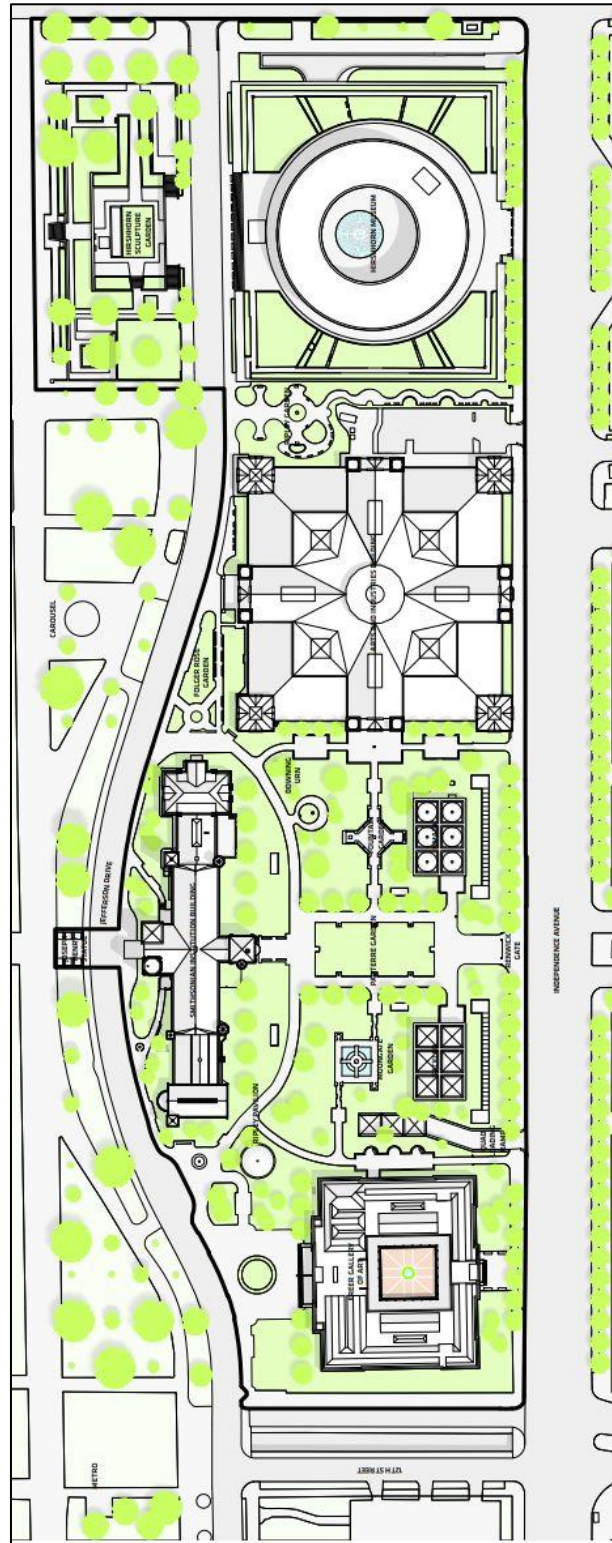
By: John M. Fowler 5/31/18

John M. Fowler
Executive Director

Date

EXHIBITS

Exhibit A – South Mall Campus Site Plan



Existing South Mall Campus Plan. Bjarke Ingels Group.

Exhibit B – Invitees to Scoping and Consulting Parties Meetings

Review Agencies

National Capital Planning Commission
US Commission of Fine Arts

State Historic Preservation Office

DC Historic Preservation Office

Tribal Historic Preservation Office

Delaware Nation

Public Agencies

Advisory Council on Historic Preservation
Architect of the Capitol
DC Department of Transportation
DC Office of Planning
National Archives and Records Administration
National Gallery of Art
National Park Service – National Mall and Memorial Parks
National Park Service, National Capital Region – National Historic Landmarks Coordinator
US Department of Agriculture
US General Services Administration
Washington Metropolitan Area Transit Authority
DC Department of the Environment
DC Department of Public Works
DC Fire and Emergency Medical Services
DC Chamber of Commerce
US Department of Energy
US Department of Health and Human Services
Federal Aviation Administration
Voice of America
Internal Revenue Service
US Department of Justice

Interested Parties

American Institute of Architects, DC Chapter
Committee of 100 on the Federal City
Cultural Landscape Foundation
Cultural Tourism DC
DC Preservation League
DC Water
Docomomo US, DC Chapter
Dwight D. Eisenhower Memorial Commission
Guild of Professional Tour Guides of Washington, DC
NPS Concessionaire
National Association of Olmsted Parks
National Coalition to Save Our Mall
National Trust for Historic Preservation
Potomac Electric Power Company
Preservation Action
Society of Architectural Historians
Society of Architectural Historians, Latrobe Chapter
Trust for the National Mall
US Capitol Historical Society
US Holocaust Memorial Museum
Victorian Society in America
Washington Gas
Southwest Neighborhood Assembly
National Civic Art Society
Waterfront Gateway Neighborhood Association
American Society of Landscape Architects
Bethesda Community Garden Club
National Conference of State Historic Preservation Officers

Local Elected Representatives

Advisory Neighborhood Commission 2C
Advisory Neighborhood Commission 6D
DC Office of the Mayor
DC City Council
DC Delegate



Smithsonian Institution
South Mall Campus Master Plan

Exhibit C – List of Consulting Parties Meetings

Consulting Parties Meeting Date	Meeting Summary
December 16, 2014	Conducted jointly with the NEPA Public Scoping Meeting to provide an overview of the project and its major goals and objectives. To introduce the Section 106 process, NCPC and SI defined the undertaking; presented a draft Area of Potential Effects (APE); and identified historic properties within the APE, including the findings of the ongoing Cultural Landscape Report (CLR) for the South Mall Campus. For the purposes of NEPA, NCPC and SI presented the purpose and need for the project, the potential environmental issues to be addressed in the EIS, and the preliminary alternatives to be analyzed in the EIS. Information was provided on the coordination of the Section 106 and NEPA processes. The presentation was followed by an open house for attendees to review the alternatives under consideration, provide written or verbal comments, or ask questions. Comments provided by Consulting Parties and meeting attendees were recorded in the South Mall Campus Master Plan Public Scoping Report (June 2015).
March 30, 2015	Information from the previous meeting was reiterated, including the draft APE and preliminary identification of historic properties. NCPC and SI also outlined the roles and responsibility of the consulting parties and the anticipated Section 106 consultation schedule. SI presented the Master Plan objectives, including: visitor experience, education programs, museum programs, garden programs, collections, special events and retail, historic preservation, building systems, sustainability, loading and service, safety, security, and urban design. Comments provided by the Consulting Parties included preservation of the Campus’s historic buildings, public outreach, the availability of technical reports, and seismic protection of the Castle. The presentation was followed by a tour of the South Mall Campus.
June 9, 2015	Meeting focused on a more detailed presentation of the range of alternatives being considered under the EIS and Section 106 processes. It also included a description of alternatives that had been considered but dismissed from further environmental review under the EIS. SI reiterated the historic properties within the Campus area and also provided additional information on the goals and objectives that contributed to the development of the Master Plan alternatives. Consulting Parties asked questions for additional information and clarification on the range of alternatives under consideration
October 7, 2015	Meeting focused on the treatment of the Castle, including historic preservation, seismic protection, and programming needs. SI presented a comparative study of major museum complexes worldwide to benchmark the programmatic needs of the South Mall Campus. SI described the historic development of the Castle and how its varying degrees of integrity would correspond to treatment approaches in the building. SI’s consulting structural engineer provided a detailed presentation of the seismic vulnerabilities of the Castle and potential mitigation options, including a comparison of conventional structural reinforcement versus base isolation. The meeting concluded with a recap of the Master Plan alternatives under consideration, illustrating specifically how closely each alternative met its programmatic area



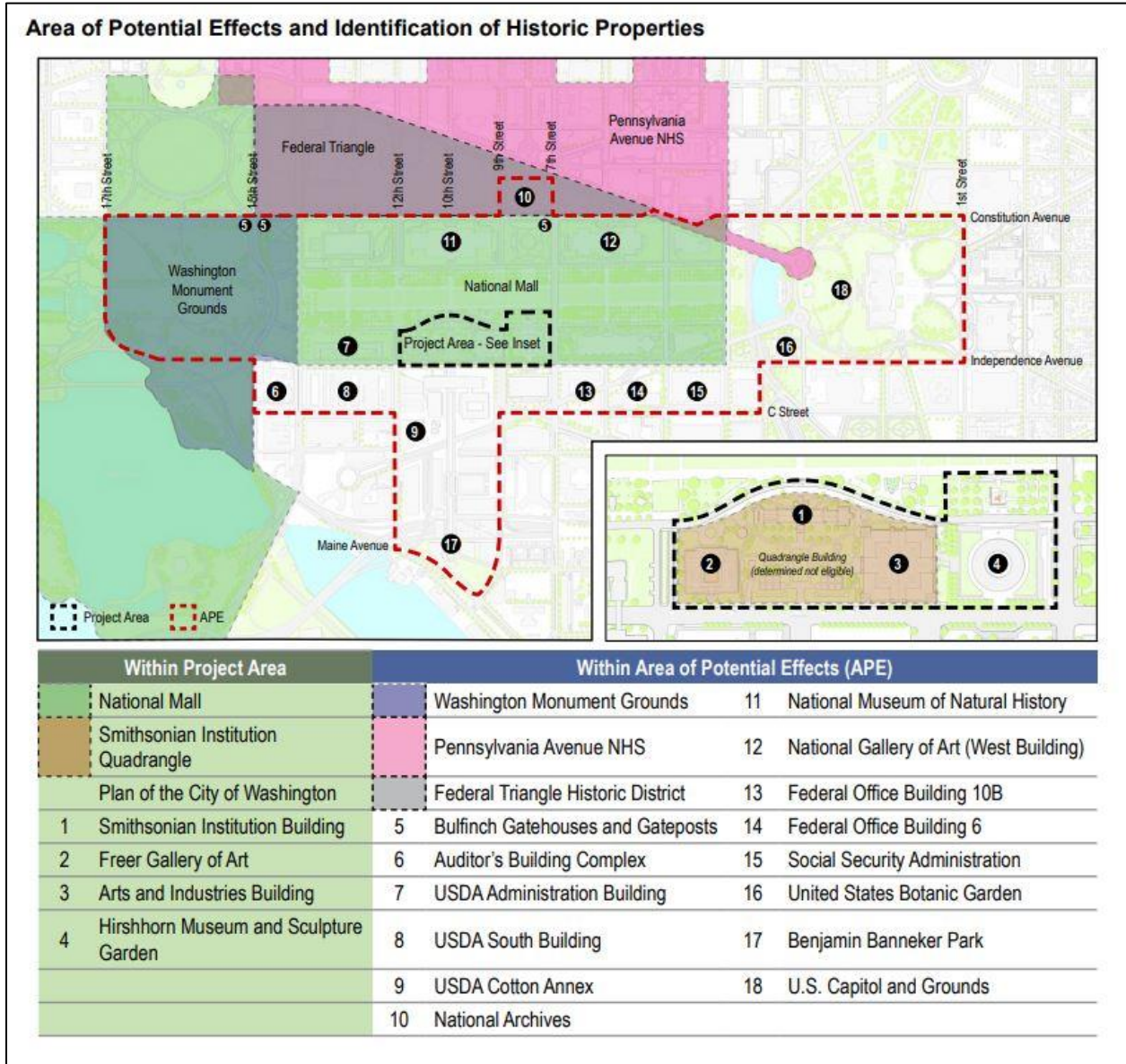
Smithsonian Institution
South Mall Campus Master Plan

	needs. Consulting Parties' comments focused on the Castle seismic protection and base isolation.
January 27, 2016	Meeting focused on the findings of the CLR being prepared for the South Mall Campus. The report was developed to document the history of the Campus and to inform both long-term and immediate treatment options. Smithsonian Gardens also presented its ongoing mission and goals as well as its objectives for the South Mall Campus Master Plan. During the presentation, SI identified several major periods of development and illustrated those with historic photographs and period plan diagrams. SI also provided an update on the ongoing NEPA process, including loading traffic counts and the Notice of Intent to prepare an EIS. Consulting Parties commented on the scope and purpose of the CLR and the maintenance of Smithsonian Gardens, and additional clarification regarding the development of alternatives and the Master Plan and EIS processes.
April 13, 2016	Meeting provided detailed, revised alternatives based on Consulting Party comments and additional material gathered to inform the Master Plan. SI also presented an update to the inventory of historic properties within the APE and project area. Consulting Parties discussed details of the master plan alternatives and how comments would be addressed.
October 26, 2016	To aid in the evaluation of the undertaking's effects on historic properties, SI completed Determinations of Eligibility for listing the Hirshhorn Museum and Sculpture Garden and the Quadrangle Building in the NRHP. The former determined that the Hirshhorn Museum was eligible for National Register listing; the latter determined that the Quadrangle Building and landscape were not individually eligible for National Register listing at this time. SI presented the findings of these reports and the research and evaluation process that led to their conclusions. SI also presented a consolidated matrix of historic properties within the APE. Consulting Parties responded to the findings presented by SI and discussed implications for the Master Plan alternatives.
May 3, 2017	SI presented Alternatives E and F, developed to respond to Consulting Party comments. SI determined the design of Alternative E to be unsuccessful, and dismissed it from evaluation in the EIS. Alternative F was presented in greater detail and carried forward for analysis in the EIS. SI also presented a general update to alternatives presented previously.
July 26, 2017	Meeting was to present and discuss potential adverse effects on historic properties across the Master Plan alternatives. Consulting Parties offered responses to these findings and discussed approaches to avoid or minimize potential adverse effects. SI also stated that it would dismiss Alternative A from further analysis in the EIS.
December 11 and 18, 2017	Public meetings held to discuss the draft Environmental Impact Statement. The content of the meetings was identical, held at different times of day to accommodate schedules for public participation. Interested parties submitted oral comments at the meetings, and the record was open for submission of written comments until January 16, 2018.
May 9, 2018	Meeting to discuss the content of the Programmatic Agreement, and discussion of comments from Consulting Parties.



Smithsonian Institution
South Mall Campus Master Plan

Exhibit D – Area of Potential Effects



The historic properties identified in the above maps and tables indicate properties that are individually listed in, or have been determined as eligible for individual listing in, the National Register of Historic Places.



Exhibit E – Master Plan Level Assessment of Effects on Historic Properties

The Master Plan Level Assessment of Effects on Historic Properties provides an assessment of the effects on National Register of Historic Places-eligible or National Register of Historic Places-listed properties from the alternatives that were considered for the South Mall Campus Master Plan.

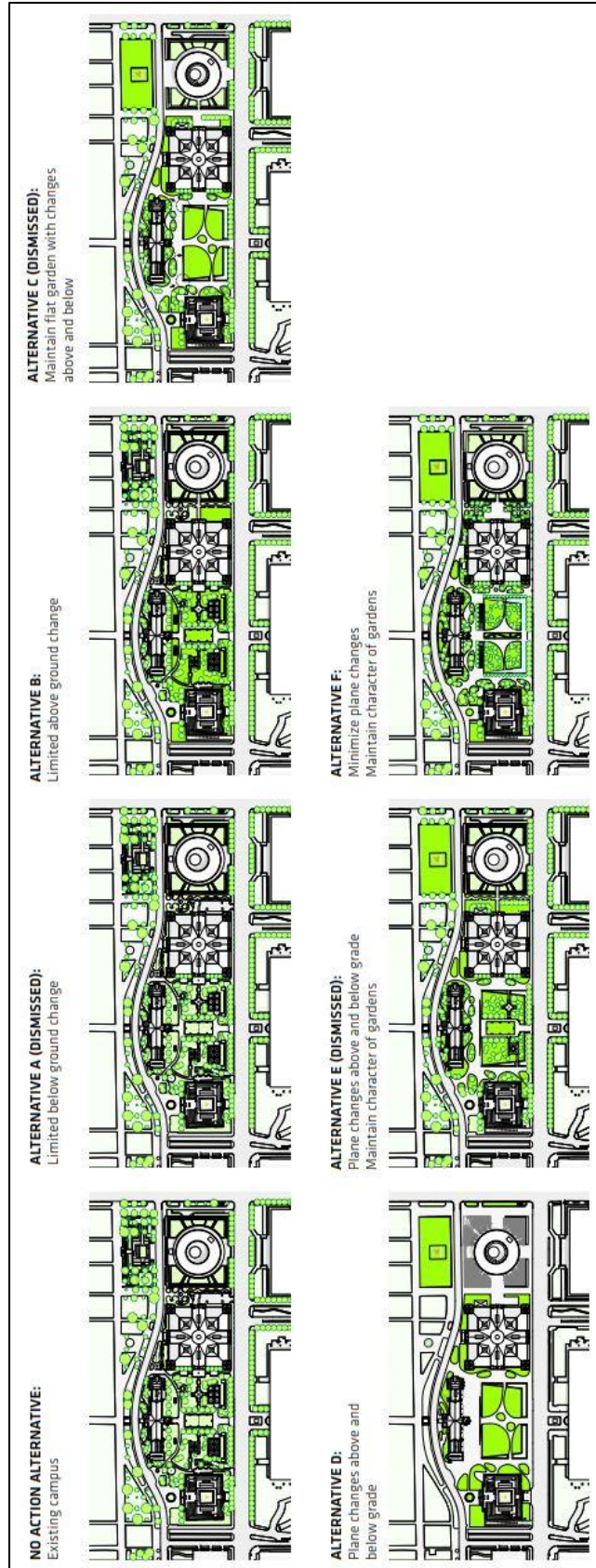
The effects analysis is based upon the Section 106 criteria of adverse effect. The effects analysis has been organized by historic properties and actions under each alternative. Direct effects are addressed first, followed by indirect effects.

In most cases, design details at the master planning level are not sufficiently developed to fully and accurately assess the effect of a specific action. In such cases, the effects will be further addressed at the time of project design in accordance with the Programmatic Agreement. Where known or potential adverse effects have been identified, the Section 106 resolution document will outline treatment strategies to avoid, minimize, or mitigate adverse effects on the historic properties and outline guidelines for addressing unknown effects. Due to the nature of this project as a Master Plan, certain actions have the potential to create adverse effects due to their related or cumulative nature. These related and cumulative effects have been described at the end of this Exhibit.

The effects analysis has been organized by historic properties and actions under Alternative A, B, D, and F (Alternatives A, C, and E were dismissed from further consideration and were not assessed for effects on historic properties). Potential adverse effects resulting from the No Action Alternative are also described.



Smithsonian Institution South Mall Campus Master Plan



Master Plan Alternatives Considered.



Smithsonian Institution South Mall Campus Master Plan

Resource	Feature/Action	NO ACTION	ALTERNATIVE A	ALTERNATIVE B	ALTERNATIVE D	ALTERNATIVE F	Comments/Additional Information	
Freer Gallery of Art, DC, MR, Contributing building to Mall HD and Quadrangle HD	Freer Gallery East Accessible Entrance: An existing window on the east side of the Freer Gallery will be lowered to create an accessible entrance from Haupt Garden.	No effect.	Alteration of the east wall will adversely affect the historic window configuration. Adverse effect.	Alteration of the east wall will adversely affect the original window configuration and diminish the property's integrity of design and materials. Adverse effect.	Alteration of the east wall will adversely affect the original window configuration and diminish the property's integrity of design and materials. Adverse effect.	Alteration of the east wall will adversely affect the original window configuration and diminish the property's integrity of design and materials. Adverse effect.	<ul style="list-style-type: none"> Undertaking is common to all action alternatives. Adverse effect has been minimized by designating the new entrance to correspond to the existing facade bay configuration and to remove a minimal amount of historic fabric. Interior lobby will be located in a modified area and will not affect significant interior spaces. 	
	New Loading Ramp: A new loading ramp will be constructed on the west lawn of the Freer Gallery to connect with centralized loading facilities.	No effect.	Existing Quad loading dock would be retained. No effect.	Existing Quad loading dock will be removed and replaced with a new ramp adjacent to the west elevation of the Freer Gallery. Potential adverse effect.	Existing Quad loading dock will be removed and replaced with a new ramp adjacent to the west elevation of the Freer Gallery. Potential adverse effect.	Existing Quad loading dock will be removed and replaced with a new ramp adjacent to the west elevation of the Freer Gallery. Potential adverse effect.	Existing Quad loading dock will be removed and replaced with a new ramp adjacent to the west elevation of the Freer Gallery. Potential adverse effect.	<ul style="list-style-type: none"> Excavation may require structural underpinning to Freer Gallery. Ramp and associated infrastructure has potential to adversely affect the character of the Freer Gallery and diminish its integrity of setting. Effects will be further evaluated at time of project design.
	Castle Blast Protection: Castle retrofit will include blast resistance to be coordinated with perimeter security elements.	Without treatment, Castle will continue to be vulnerable to potential blast damage. Potential adverse effect.	Blast protection will include hardening and replacement of non-original components, including windows. Project will be designed to avoid effects on historic fabric, if possible. Potential adverse effect.	Blast protection will include hardening and replacement of non-original components, including windows. Project will be designed to avoid effects on historic fabric, if possible. Potential adverse effect.	Blast protection will include hardening and replacement of non-original components, including windows. Project will be designed to avoid effects on historic fabric, if possible. Potential adverse effect.	Blast protection will include hardening and replacement of non-original components, including windows. Project will be designed to avoid effects on historic fabric, if possible. Potential adverse effect.	Blast protection will include hardening and replacement of non-original components, including windows. Project will be designed to avoid effects on historic fabric, if possible. Potential adverse effect.	<ul style="list-style-type: none"> Undertaking is common to all action alternatives. Blast protection is consistent with Security Design Criteria for SI Facilities. Blast protection will be coordinated with master plan perimeter security design.
Smithsonian Institution Building "Castle" DC, MR, /MHL, Contributing building to Mall HD and Quadrangle HD	Castle Base Isolation: Base isolation will include excavation beneath the Castle and introduction of base isolators beneath the existing foundation.	Without treatment, Castle will continue to deteriorate and be vulnerable to potential damage. Potential adverse effect.	Base isolation would be designed and monitored to ensure protection of Castle. Action has potential to adversely affect character of Castle and diminish its integrity of setting. Potential adverse effect.	Base isolation would be designed and monitored to ensure protection of Castle. Action has potential to adversely affect character of Castle and diminish its integrity of setting. Potential adverse effect.	Base isolation would be designed and monitored to ensure protection of Castle. Action has potential to adversely affect character of Castle and diminish its integrity of setting. Potential adverse effect.	Base isolation would be designed and monitored to ensure protection of Castle. Action has potential to adversely affect character of Castle and diminish its integrity of setting. Potential adverse effect.	<ul style="list-style-type: none"> Undertaking is common to all action alternatives. Seismic protection is consistent with building code. Base isolation requires a neutral perimeter around base of the Castle. Perimeter buffer will be integrated into the landscape. Consistent with best practices for base isolation, SI will solicit third-party review by qualified engineers to ensure protection of Castle. 	
	Castle Seismic Bracing: Structural bracing will be added to supplement the Castle's existing structure.	Without treatment, Castle will continue to deteriorate and be vulnerable to potential damage. Potential adverse effect.	Structural bracing may require the removal or modification of historic fabric, with the potential to diminish the Castle's integrity of design, materials, and workmanship. Potential adverse effect.	Structural bracing may require the removal or modification of historic fabric, with the potential to diminish the Castle's integrity of design, materials, and workmanship. Potential adverse effect.	Structural bracing may require the removal or modification of historic fabric, with the potential to diminish the Castle's integrity of design, materials, and workmanship. Potential adverse effect.	Structural bracing may require the removal or modification of historic fabric, with the potential to diminish the Castle's integrity of design, materials, and workmanship. Potential adverse effect.	Structural bracing may require the removal or modification of historic fabric, with the potential to diminish the Castle's integrity of design, materials, and workmanship. Potential adverse effect.	<ul style="list-style-type: none"> Undertaking is common to all action alternatives. Seismic protection is consistent with building code. Structural bracing will focus on the protection of Castle towers and chimneys. Bracing will be limited to building interior and will not be visible from the exterior or significant interior spaces. Consistent with best practices for base isolation, SI will solicit third-party review by qualified engineers to ensure protection of Castle.

MR = National Register of Historic Places; HD = Historic District; DC = DC Inventory of Historic Sites; NHL = National Historic Landmark; MHS: National Historic Site

Potential adverse effect

Adverse effect



Smithsonian Institution South Mall Campus Master Plan

Resource	Feature/Action	NO ACTION	ALTERNATIVE A	ALTERNATIVE B Direct Effects - Within Project Area	ALTERNATIVE D	ALTERNATIVE F	Comments/Additional Information
Smithsonian Institution Building "Castle" DC, NR, NHL, Contributing building to Mall HD and Quadrangle HD	Castle Basement Floor Lowering: In connection with seismic retrofit, the basement floor level will be lowered to create additional headroom for the visitor center and other program uses. Mechanical and other infill will be removed to expose the historic masonry vaults, piers, and walls.	No effect.	Project requires additional study to determine the historic integrity of Castle basement and effects to masonry vaults, piers, and walls. Altering the proportions of the basement will likely result in an adverse effect. Adverse effect.	Project requires additional study to determine the historic integrity of Castle basement and effects to masonry vaults, piers, and walls. Altering the proportions of the basement will likely result in an adverse effect. Adverse effect.	Project requires additional study to determine the historic integrity of Castle basement and effects to masonry vaults, piers, and walls. Altering the proportions of the basement will likely result in an adverse effect. Adverse effect.	Project requires additional study to determine the historic integrity of Castle basement and effects to masonry vaults, piers, and walls. Altering the proportions of the basement will likely result in an adverse effect. Adverse effect.	<ul style="list-style-type: none"> Undertaking is common to all action alternatives. Undertaking will remove incompatible infill construction and allow for the restoration of these historic features. Detailing of historic structural elements will be designed to meet the Secretary of the Interior Standards. Approximately one-third of basement level was previously lowered in connection to Quadrangle and in mechanical and food service spaces.
	Castle Interior Restoration: The ground and upper floors of the Castle will be rehabilitated, with significant interior spaces restored to their period(s) of significance.	Without a coordinated treatment approach, Castle interior and systems will continue to deteriorate. Potential adverse effect.	Restoration is generally expected to be beneficial but plans have not yet been sufficiently developed to make a determination of effect. Effects to be determined.	Restoration is generally expected to be beneficial but plans have not yet been sufficiently developed to make a determination of effect. Effects to be determined.	Restoration is generally expected to be beneficial but plans have not yet been sufficiently developed to make a determination of effect. Effects to be determined.	Restoration is generally expected to be beneficial but plans have not yet been sufficiently developed to make a determination of effect. Effects to be determined.	<ul style="list-style-type: none"> Undertaking is common to all action alternatives. Undertaking will remove incompatible infill construction and will be designed to meet the Secretary of the Interior Standards. Undertaking will restore primary public interior spaces and will retain historic configuration of east wing and range.
Castle Sub-Basement Expansion: A new sub-basement will be excavated beneath the existing basement level. Sub-basement will provide loading, utility, and building support. The footprint of the proposed expansion varies by alternative.	No effect.	No sub-basement is proposed. Existing service connection tunnel to the Quad will remain. No effect.	Sub-basement excavation is limited to the east and west Castle ranges and wings. Potential adverse effect.	Sub-basement excavation will include entire Castle and will require extensive structural bracing. Adverse effect.	Sub-basement excavation is limited to the west range and wing. Potential adverse effect.	<ul style="list-style-type: none"> Excavation beneath the Castle is necessary for the functionality of the central delivery of goods, services, handling of trash and recycling, and museum exhibit delivery. Expanded sub-basement area will require additional egress through connecting buildings. Excavation will be monitored to ensure safety of building during implementation. 	
Visitor Center Entrance: A new means of entrance and egress from the below-grade Visitor Center is proposed in several alternatives.	No effect.	No new entrance is proposed. Quad pavilions will continue to serve as entrances to below-grade facilities. No effect.	Removal of the Ripley Pavilion would have an adverse effect and may require a new entrance or egress pavilion adjacent to Castle. The size and visibility of the entrance has potential to adversely affect character of Castle and diminish its integrity or setting. Adverse effect.	Below-grade "dip" entrance to Visitor Center will adversely affect character of Castle and diminish its integrity of setting. Adverse effect.	Visitor Center entrance will be provided in below-grade court located to the south of the Castle. The new entry may require removal of historic fabric and the size and visibility of the entrance is likely to adversely affect character of Castle and diminish its integrity of setting. Adverse effect.	<ul style="list-style-type: none"> In Alternative F, the adverse effect of a visible grade change has been avoided or minimized by reducing the size of the entrance, limiting its visibility from the south, and maintaining the existing flat grade of the Haupt Garden. 	

NR = National Register of Historic Places; HD = Historic District; DC = DC Inventory of Historic Sites; NHL = National Historic Landmark; MHS = National Historic Site

Potential adverse effect

Adverse effect



Smithsonian Institution South Mall Campus Master Plan

Resource	Feature/Action	NO ACTION	ALTERNATIVE A	ALTERNATIVE B	ALTERNATIVE D	ALTERNATIVE F	Comments/Additional Information	
		Direct Effects - Within Project Area						
Arts & Industries Building (AIB) DC, MR, NHL Contributing building to Mall, HD and Quadrangle HD	Reopen AIB for Public Circulation: The non-historic east security door will be removed and AIB will be opened to allow interior east-west circulation.	No effect.	No alterations are proposed. No effect.	Returning the east door to use will not adversely affect the character or integrity of AIB. No adverse effect.	Returning the east door to use will not adversely affect the character or integrity of AIB. No adverse effect.	Returning the east door to use will not adversely affect the character or integrity of AIB. No adverse effect.	<ul style="list-style-type: none"> Removing the non-historic security door will allow the extant reproduction door to be visible. While a permanent program and funding are developed, SI will continue to utilize AIB for public exhibitions, educational programming and special events. Undertaking will be designed to meet the Secretary of the Interior Standards. For any permanent use modifications, the Undertaking will restore primary public interior spaces and will retain the historic open configuration of the interior to the maximum extent feasible. Historic floorplan and vaulted interior spaces are ideal for flexible programming and special events. 	
	AIB Interior: Facilitated interim and/or permanent use of the AIB for public exhibitions, educational programming and special events. AIB may house a temporary Visitor's Center during the Castle restoration.	No effect.	Modifications expected to be beneficial but plans have not yet been sufficiently developed to make a determination of effect. Effects to be determined.	Modifications expected to be beneficial but plans have not yet been sufficiently developed to make a determination of effect. Effects to be determined.	Modifications expected to be beneficial but plans have not yet been sufficiently developed to make a determination of effect. Effects to be determined.	Modifications expected to be beneficial but plans have not yet been sufficiently developed to make a determination of effect. Effects to be determined.	Modifications expected to be beneficial but plans have not yet been sufficiently developed to make a determination of effect. Effects to be determined.	<ul style="list-style-type: none"> Secretary of the Interior Standards. For any permanent use modifications, the Undertaking will restore primary public interior spaces and will retain the historic open configuration of the interior to the maximum extent feasible. Historic floorplan and vaulted interior spaces are ideal for flexible programming and special events.
	Remove Surface Parking Lot and Expand Ripley Garden: The non-historic parking lot to the east of AIB will be removed, allowing for the expansion of the adjacent Ripley Garden.	No effect.	No alterations are proposed. No effect.	Removing the parking lot and expanding the existing garden will not adversely affect the character or integrity of AIB. No adverse effect.	Removing the parking lot and expanding the existing garden will not adversely affect the character or integrity of AIB. No adverse effect.	Removing the parking lot and expanding the existing garden will not adversely affect the character or integrity of AIB. No adverse effect.	Removing the parking lot and expanding the existing garden will not adversely affect the character or integrity of AIB. No adverse effect.	<ul style="list-style-type: none"> In Alternatives B-F, the expanded garden will maintain the character and setting of the existing Ripley Garden.
Central Utility Plant: Unexcavated areas adjacent to the Quad will be excavated to create a central utility plant for the campus. The location and extent of excavation varies by alternative.	No effect.	No excavation or utility/loading connection are proposed. No effect.	Excavation will require structural underpinning to be performed on west side of AIB foundations. A1-grade ventilation and access infrastructure associated with utility plant has potential to adversely affect character and setting of AIB. Potential adverse effect.	Excavation will require structural underpinning to be performed on west side of AIB foundations. A1-grade ventilation and access infrastructure associated with utility plant has potential to adversely affect character and setting of AIB. Potential adverse effect.	Excavation will require structural underpinning to be performed on west side of AIB foundations. A1-grade ventilation and access infrastructure associated with utility plant has potential to adversely affect character and setting of AIB. Potential adverse effect.	Excavation will require structural underpinning to be performed on west side of AIB foundations. A1-grade ventilation and access infrastructure associated with utility plant has potential to adversely affect character and setting of AIB. Potential adverse effect.	<ul style="list-style-type: none"> Excavation may require structural underpinning to AIB. Excavation will be monitored to ensure safety of AIB during implementation. Potential visual effect resulting from at-grade utility plant infrastructure will be minimized by integrating these features into the landscape and building design. 	

MR = National Register of Historic Places; HD = Historic District; DC = DC Inventory of Historic Sites; NHL = National Historic Landmark; NHS = National Historic Site

Potential adverse effect

Adverse effect



Smithsonian Institution South Mall Campus Master Plan

Resource	Feature/Action	NO ACTION	ALTERNATIVE A	ALTERNATIVE B	ALTERNATIVE D	ALTERNATIVE F	Comments/Additional Information
Hirshhorn Museum & Sculpture Garden Determined eligible for NR Contributing building to Mall HD	Hirshhorn Plaza Walls: Portions of the Plaza walls will be removed to allow a direct pedestrian connection to AIB and the Ripley Garden.	No effect.	No alterations are proposed. No effect.	Small opening will be inserted on the west Plaza wall. Adverse effect.	Portions of the north, west, and east Plaza walls will be removed. Adverse effect.	Small opening will be inserted on the west Plaza wall. Adverse effect.	<ul style="list-style-type: none"> Opening improves east-west circulation across the campus by providing a direct pedestrian link between the AIB, Ripley Garden, and Hirshhorn Plaza. Adverse effect in Alternatives B and F has been minimized by limiting the opening to the dimension of the proposed east-west pedestrian link.
	Hirshhorn Plaza Tunnel: A direct pedestrian connection between the Hirshhorn Plaza and Sculpture Garden beneath Jefferson Drive will be restored or replaced. Degree of intervention varies by alternative.	No effect.	No alterations are proposed. No effect.	Tunnel would be reopened and restored to its original configuration. No adverse effect.	Tunnel will be reopened, expanded, and reconfigured, resulting in a loss of historic fabric. Adverse effect.	Tunnel will be reopened, expanded, and reconfigured, resulting in a loss of historic fabric. Adverse effect.	<ul style="list-style-type: none"> In Alternatives B-F, the existing education facility will be relocated. The Tunnel is an original feature of the Hirshhorn site. It is currently enclosed and infilled to serve as an education facility.
	Hirshhorn Building Renovation: Hirshhorn Building and Plaza will be renovated.	Without treatment, building envelope and site will continue to deteriorate. Potential adverse effect.	Renovation will not affect character or integrity of the building or site. No adverse effect.	Renovation will not affect character or integrity of the building or site. No adverse effect.	Renovation will not affect character or integrity of the building or site. No adverse effect.	Renovation will not affect character or integrity of the building or site. No adverse effect.	<ul style="list-style-type: none"> Undertaking is common to all action alternatives. Adverse effects caused by the reconfiguration of the Sculpture Garden in Alternatives D and F are addressed separately. Undertaking will be designed to meet the Secretary of the Interior Standards. Any interim changes to the Plaza or Sculpture Garden will undergo separate review.
Hirshhorn Sculpture Garden Walls: Perimeter Sculpture Garden walls will be restored.	Hirshhorn Sculpture Garden Walls: Perimeter Sculpture Garden walls will be restored.	No effect.	Walls will be repaired in kind. No adverse effect.	Walls will be repaired in kind. No adverse effect.	Walls will be repaired in kind. No adverse effect.	Walls will be repaired in kind. No adverse effect.	<ul style="list-style-type: none"> Undertaking is common to all action alternatives. Repairs to walls are necessary to prevent further deterioration of their condition and appearance.
	New Galleries Beneath Sculpture Garden: In Alternatives D and F, the interior walls of the Sculpture Garden will be reconfigured to allow for high-ceilinged galleries below.	No effect.	Modest interim modifications without changes to grade may be considered. Potential adverse effect.	Modest interim modifications without changes to grade may be considered. Potential adverse effect.	Existing Sculpture Garden elements will be removed and replaced with a new Sculpture Garden and galleries below. Adverse effect.	Existing Sculpture Garden elements will be removed and replaced with a new Sculpture Garden and galleries below. Adverse effect.	<ul style="list-style-type: none"> The new Sculpture Garden proposed in Alternatives D and F will remain below the prevailing grade of the Mall. The majority of the existing perimeter walls will be retained. Any interim changes to the Sculpture Garden will undergo separate review.
Quadrangle Building Contributing building to: National Mall HD DC, NR	Remove Loading Ramp/ Expand Garden: The existing loading ramp will be removed and the Haupt Garden will be expanded into this area.	No effect.	Existing loading ramp will remain. No effect.	Loading ramp will be removed and garden will be expanded into this area. No adverse effect.	Loading ramp will be removed and garden will be expanded into this area. No adverse effect.	Loading ramp will be removed and garden will be expanded into this area. No adverse effect.	<ul style="list-style-type: none"> Removal of the loading dock in Alternatives B-F will not adversely affect the contributing Quad building.

NR = National Register of Historic Places; HD = Historic District; DC = DC Inventory of Historic Sites; NHL = National Historic Landmark; NHS = National Historic Site

Potential adverse effect
Adverse effect



Smithsonian Institution South Mall Campus Master Plan

Resource	Feature/Action	NO ACTION	ALTERNATIVE A	ALTERNATIVE B Direct Effects - Within Project Area	ALTERNATIVE D	ALTERNATIVE F	Comments/Additional Information
Quadrangle Building Contributing building to: National Mall HD, DC, NR	Ripley Pavilion: The Ripley Pavilion will be removed to allow construction of a consolidated loading facility.	No effect.	Ripley Pavilion will remain. No effect.	Removal of the Ripley Pavilion will adversely affect the contributing Quad building. Adverse Effect.	Removal of the Ripley Pavilion will adversely affect the contributing Quad building. Adverse Effect.	Removal of the Ripley Pavilion will adversely affect the contributing Quad building. Adverse Effect.	<ul style="list-style-type: none"> Removal of the Ripley Pavilion in Alternatives B-F will restore views between the Quad and Mall and south of the Castle to the Washington Monument. A new exit will be constructed to the south of the Castle to meet egress requirements.
	Replace Quadrangle Roof Membrane: Quadrangle roof membrane will be replaced.	Without treatment, Quad roof membrane will continue to deteriorate, posing danger to building and collections. Potential adverse effect.	Replacement of the roof membrane will not adversely affect the contributing Quad building. No adverse effect.	Replacement of the roof membrane will not adversely affect the contributing Quad building. No adverse effect.	Replacement of the roof membrane will not adversely affect the contributing Quad building. No adverse effect.	Replacement of the roof membrane will not adversely affect the contributing Quad building. No adverse effect.	<ul style="list-style-type: none"> Replacement of the roof membrane is common to all action alternatives. Replacement of roof membrane is necessary to protect Quadrangle and its collections. The reconstruction of the Haupt Garden is addressed separately, and has a greater potential to adversely affect this resource.
	Reconfigure Haupt Garden: In coordination with roof membrane replacement, the Haupt Garden will be reconfigured to accommodate new Quad museum and Visitor Center access. Degree of intervention varies by alternative.	No effect.	Haupt Garden features will be replaced in kind following roof membrane replacement. No adverse effect.	Haupt Garden features will be replaced in kind following roof membrane replacement. No adverse effect.	Haupt Garden will be substantially reconfigured. Removal of Haupt Garden features will adversely affect character and integrity of the contributing Quad building. Adverse effect.	Haupt Garden will be reconfigured, although certain elements will be replaced in kind. Removal of Haupt Garden features will adversely affect character and integrity of the contributing Quad building. Adverse effect.	<ul style="list-style-type: none"> Adverse effect has been minimized in Alternative F by retaining the existing grade and garden-like quality of the Haupt Garden and by retaining certain garden features.
	Central Utility Plant: Unexcavated areas adjacent to the Quad will be excavated to create a central utility plant for the campus. The location and extent of excavation varies by alternative.	No effect.	No excavation or central utility plan is proposed. No effect.	In Alternative B, the plant will be located in the unexcavated area between the Quad and AIB. At-grade ventilation and access infrastructure associated with utility plant has potential to adversely affect character of Quadrangle and Haupt Garden. Potential adverse effect.	In Alternative D, the plant will be located in the sub-basement beneath the Castle. At-grade ventilation and access infrastructure associated with utility plant will adversely affect the character of the Quadrangle, Castle, and Haupt Garden. Adverse effect.	In Alternative F, the plant will be located in the unexcavated area between the Quad and AIB. At-grade ventilation and access infrastructure associated with utility plant has potential to adversely affect character of Quadrangle and Haupt Garden. Potential adverse effect.	<ul style="list-style-type: none"> Excavation will require structural underpinning. Potential visual effect resulting from at-grade utility plant infrastructure will be minimized by integrating these features into the landscape and building design.

NR = National Register of Historic Places; HD = Historic District; DC = DC Inventory of Historic Sites; NHL = National Historic Landmark; NHS = National Historic Site

Potential adverse effect

Adverse effect



Smithsonian Institution South Mall Campus Master Plan

Resource	Feature/Action	NO ACTION	Direct Effects - Within Project Area				Comments/Additional Information
			ALTERNATIVE A	ALTERNATIVE B	ALTERNATIVE D	ALTERNATIVE F	
Quadrangle Building Contributing building to: National Mall HD DC, NR	Quad Museum Pavilions: The pavilions will be reconfigured or replaced with new pavilions. Degree of intervention varies by alternative.	No effect.	Museum entrances will be reoriented to existing glass infilled openings in the north walls of the museum pavilions. No historic fabric to be removed. No adverse effect.	Museum pavilions will be removed and replaced with new pavilions further to the north. Removal of pavilions will adversely affect the contributing Quad building and alters setting of the Castle and other historic buildings. Adverse effect.	Museum pavilions will be removed and replaced with new pavilions further to the north. Removal of pavilions will adversely affect the contributing Quad building and alters setting of the Castle and other historic buildings. Adverse effect.	<ul style="list-style-type: none"> In Alternative B, only the removal of glazing infills required to accommodate new entrances. In Alternatives D and F, relocation of the museum pavilions will allow for greater visibility from the Mall and significant improvement to the quality of the below-grade museum and circulation space. The existing above-grade egress and skylight structures will also be reconfigured in Alternatives D and F. Effects of the contemporary character of the new museum pavilions will be evaluated at time of design. 	
	Quad Skylights: In Alternatives D and F, existing skylights will be removed and new skylights will be integrated into the Haupt Garden design to provide interior daylighting for the Quad museums and Visitor Center.	No effect.	No skylight alterations are proposed. No effect.	Removal of contributing skylight features and installation of larger skylights will adversely affect the contributing Quad building and alters setting of the Castle and other historic buildings. Adverse effect.	Removal of contributing skylight features and installation of larger skylights will adversely affect the contributing Quad building and alters setting of the Castle and other historic buildings. Adverse effect.	<ul style="list-style-type: none"> In Alternatives D and F, adverse effects will be minimized by integrating these features into the landscape and building design. 	
National Mall HD DC, NR	Perimeter Security: Perimeter security elements will be installed around the South Mall Campus.	No effect.	Perimeter security has the potential to adversely affect the character of the Mall, including the relationship of buildings to the surrounding landscapes. Potential adverse effect.	Perimeter security has the potential to adversely affect the character of the Mall, including the relationship of buildings to the surrounding landscapes. Potential adverse effect.	<ul style="list-style-type: none"> Undertaking is common to all action alternatives. NCPG granted preliminary approval for a Mall-wide building perimeter security for SI museums in 2004. In the Master Plan, adverse effects were avoided by removing alterations to Jefferson Drive and Independence Avenue from all alternatives. Perimeter security elements will be integrated into hardened landscape features to the greatest degree possible. 		
Plan of the City of Washington (L'Enfant Plan) DC, NR	All Plan Components: The Master Plan proposes no major alterations to contributing streets and avenues within the project area.	No effect.	No adverse effect.	No adverse effect.	<ul style="list-style-type: none"> Independence Avenue, Twelfth Street, Seventh Street, and Jefferson Drive are contributing elements to the Plan of the City of Washington. Adverse effects were avoided by removing alterations to Jefferson Drive and Independence Avenue from all Alternatives. 		
Potential Archaeological Resources	Plan Excavation: Excavation is proposed for new loading, sub-basement, and utility plant facilities. Degree of intervention varies by alternative.	No effect.	Areas of excavation have the potential to impact previously undiscovered archaeological resources. Effect to be determined.	Areas of excavation have the potential to impact previously undiscovered archaeological resources. Effect to be determined.	<ul style="list-style-type: none"> The site has been extensively disturbed and has minimal potential for archaeological resources. Programmatic Agreement will include stipulations for previously undiscovered archaeological resources. 		

Potential adverse effect

Adverse effect

NR = National Register of Historic Places, HD = Historic District, DC = DC Inventory of Historic Sites, NHL = National Historic Landmark, NHP = National Historic Site



Smithsonian Institution South Mall Campus Master Plan

Resource	Feature/Action	NO ACTION	ALTERNATIVE A	ALTERNATIVE B	ALTERNATIVE D	ALTERNATIVE F	Comments/Additional Information
Plan of the City of Washington (L'Enfant Plan) DC, NR	Grade Changes Across Project Area: Existing grades in the Hirshhorn Sculpture Garden and Haupt Garden will be modified to varying degrees across the alternatives.	No effect.	No major above-grade changes are proposed. No adverse effect.	No major above-grade changes are proposed. No adverse effect.	New Quad museum pavilions, sunken Visitor Center entrance, and modified Sculpture Garden will not affect contributing views. No adverse effect.	New Quad museum pavilions and modified Sculpture Garden will not affect contributing views. No adverse effect.	<ul style="list-style-type: none"> The new Sculpture Garden proposed in Alternatives D and F will remain below grade of Mall.
	Hirshhorn Sculpture Garden Alterations: In Alternatives D-F, portions of the Hirshhorn Sculpture Garden will be raised to create high-ceilinged galleries below.	No effect.	No substantial alterations to the Sculpture Garden are proposed. No adverse effect.	No substantial alterations to the Sculpture Garden are proposed. No adverse effect.	Modifying the Sculpture Garden has the potential to affect the east-west Mall viewshed. Potential adverse effect.	Modifying the Sculpture Garden has the potential to affect the east-west Mall viewshed. Potential adverse effect.	<ul style="list-style-type: none"> Contributing views were identified in the amended National Mall National Register Nomination. The new Sculpture Garden proposed in Alternatives D and F will remain below grade of Mall to minimize the potential adverse effect. Effects will be further evaluated at time of project design, to assess the visibility of the proposed changes.
	Remove Loading Ramp/Expand Garden: The existing loading ramp will be removed and a new ramp installed adjacent to the Freer Gallery.	No effect.	Existing Quad loading dock would be retained. No effect.	The new loading dock ramp will be only minimally visible from the Mall. No adverse effect.	The new loading dock ramp will be only minimally visible from the Mall. No adverse effect.	The new loading dock ramp will be only minimally visible from the Mall. No adverse effect.	<ul style="list-style-type: none"> Beyond the potential direct effects to the contributing Freer Gallery described above, there will be no adverse effects on the Mall HD. The new loading ramp has no potential to alter the principal, east-west Mall viewshed.
National Mall HD DC, NR	Quad Museum Pavilions: The pavilions will be reconfigured or replaced with new pavilions. Degree of intervention varies by alternative.	No effect.	No reconfiguration of the museum pavilions is proposed. No effect.	Only a minor reconfiguration of museum pavilions is proposed. No adverse effect.	Replacement of these pavilions will not negatively affect contributing historic views within the Mall. No adverse effect.	Replacement of these pavilions will not negatively affect contributing historic views within the Mall. No adverse effect.	<ul style="list-style-type: none"> Contributing views were identified in the amended National Mall National Register Nomination.
Washington Monument and Grounds HD DC, NR	Grade Changes Across Project Area: Existing grades in the Hirshhorn Sculpture Garden and Haupt Garden will be modified to varying degrees across the alternatives.	No effect.	No major above-grade changes are proposed. No adverse effect.	Alternative B proposes limited above-ground changes. No adverse effect.	Alternative D proposes grade changes in the Haupt Garden and a higher elevation for the Sculpture Garden. Changes will be minimally visible from the Monument Grounds. No adverse effect.	Alternative F proposes a higher elevation for the Sculpture Garden. Changes will be minimally visible from the Monument Grounds. No adverse effect.	<ul style="list-style-type: none"> In all action alternatives, the removal of the Ripley Pavilion will restore the viewshed between the Monument and South Yard. In all action alternatives, the loading ramp adjacent to the Freer Gallery will be minimally visible from the Monument Grounds.
Federal Triangle HD DC, DCE Pennsylvania Avenue NHS DC, NR	All Plan Components	No effect.	No major above-grade changes are proposed. No adverse effect.	Projects proposed under all alternatives will be minimally visible and have no potential to adversely affect surrounding historic resources. No adverse effect.	Projects proposed under all alternatives will be minimally visible and have no potential to adversely affect surrounding historic resources. No adverse effect.	Projects proposed under all alternatives will be minimally visible and have no potential to adversely affect surrounding historic resources. No adverse effect.	<ul style="list-style-type: none"> A small portion of the APE overlaps with these historic districts, drawn to incorporate the Ninth Street viewshed.

NR = National Register of Historic Places; HD = Historic District; DC = DC Inventory of Historic Sites; NHL = National Historic Landmark; NHS = National Historic Site

Potential adverse effect

Adverse effect



Smithsonian Institution South Mall Campus Master Plan

Resource	Feature/Action	NO ACTION	ALTERNATIVE A	ALTERNATIVE B Indirect Effects - Within Area of Potential Effects	ALTERNATIVE D	ALTERNATIVE F	Comments/Additional Information
Individually Designated Historic Properties See APE for complete list	All Plan Components	No effect.	Projects proposed will be minimally visible and have no potential to adversely affect surrounding historic resources. No adverse effect.	Visibility of the proposed alterations under will be determined at the time of the project. Potential adverse effect.	Visibility of the proposed alterations under will be determined at the time of the project. Potential adverse effect.	Visibility of the proposed alterations under will be determined at the time of the project. Potential adverse effect.	<ul style="list-style-type: none"> Effects will be further evaluated at time of project design, to assess the visibility of the proposed changes from these locations. There is a limited potential for adverse effects to result.

NR = National Register of Historic Places; HD = Historic District; DC = DC Inventory of Historic Sites; NHL = National Historic Landmark; NHP = National Historic Site

Potential adverse effect

Adverse effect



Cumulative and Related Effects

NHPA Section 106 implementing regulations require agencies to consider the cumulative effects on their undertakings on historic properties. When assessed individually, some of the above-described actions may have a limited potential to adversely affect historic properties. However, when assessed as connected or interrelated projects, these cumulative effects have the potential to rise to the level of adverse under Section 106. Furthermore, many of these actions, such as restoring the public interior spaces of the Castle, are intended to counter past and reasonably foreseeable future actions and/or events. This narrative includes a discussion of those past and future actions.

In most cases, these cumulative effects are common to all action alternatives. Therefore, they have been organized by historic property, rather than by alternative. This assessment has identified no cumulative effects to properties outside the project area; therefore, they have been excluded from this narrative.

Freer Gallery of Art

No cumulative adverse effects have been identified on the Freer Gallery.

Smithsonian Institution Building “Castle”

Under all action alternatives, the degree of change proposed for the Castle has the potential to generate cumulative adverse effects on this property.

Throughout the twentieth century, alterations to the Castle have resulted in a diminished degree of integrity to its significant interior spaces. Circa 1940, several bays on the east and west sides of the Lower Main Hall (Great Hall) were infilled with partition walls, reducing the original length of that space by approximately one-third. The enclosed areas behind these partitions were subsequently modified in 1987 to accommodate restrooms, offices, and a café.

In the Upper Main Hall, the installation of the Woodrow Wilson Center circa 1968 subdivided this room both horizontally and vertically, creating an additional floor and a warren of offices and corridors in the formerly open space. On the basement floor, infill construction—including extensive mechanical equipment, ducts, and pipes—completed throughout the late nineteenth to late twentieth centuries has obscured the historic masonry piers and vaults. Cumulatively, these alterations have diminished the Castle’s integrity of design, feeling, workmanship, and materials, and feeling, resulting in an adverse effect.

In 2011, an earthquake originating in Mineral, Virginia resulted in damage to buildings throughout Washington, including on the Castle’s chimneys and towers, demonstrating the building’s susceptibility to potential future damage. Furthermore, the lack of adequate perimeter security and blast protection for the Castle creates a risk for future potential damage.

The South Mall Campus Master Plan seeks to address the deficiencies in the Castle’s historic character and structural integrity through a coordinated expansion, rehabilitation, and structural and blast upgrade. All action alternatives propose extensive excavation to create a below-grade Visitor Center beneath and adjacent to the Castle basement and to allow for the installation of a base isolation system. The sub-basement expansion will accommodate visitor amenities in addition to mechanical equipment and centralized loading. The relocation of these systems and program elements will allow mechanical equipment and infill construction



Smithsonian Institution *South Mall Campus Master Plan*

to be removed from the historic spaces above, allowing for the restoration of the Lower and Upper Main Halls. The basement floor will be lowered throughout, partitions and equipment removed, and the masonry vaults and piers restored.

In all action alternatives, the degree of change proposed for the Castle— including interior restoration and rehabilitation, blast protection, base isolation, seismic bracing, basement expansion, and sub-basement excavation—has the potential to generate cumulative adverse effects on this property, and by association on the National Mall Historic District (to which the Castle is a contributing property). The addition of a Visitor Center ingress or egress and new museum pavilions to the south of the Castle also have the potential to diminish the Castle’s integrity of setting. However, these cumulative adverse effects could be viewed as balanced by the beneficial effects of the Castle interior restoration and structural upgrade, which ensures long-term preservation of the building. The proposed changes also avoid more impactful alterations to the Castle, including a potential above-grade exterior addition.

To minimize or avoid cumulative adverse effects at the time of project implementation, the Castle treatment must be carefully designed and implemented to meet or exceed historic preservation standards for the treatment of historic properties. Implementation of the Castle restoration under the Master Plan will allow SI to better utilize this National Historic Landmark and reallocate interior spaces to public use.

Arts and Industries Building

No cumulative adverse effects have been identified on AIB.

Hirshhorn Museum and Sculpture Garden

Under Alternatives D and F, the greater degree of change proposed for the Hirshhorn Museum and Sculpture Garden has the potential to generate cumulative adverse effects on this property. Two major landscape projects in the twentieth century altered the character of the Hirshhorn Plaza and Sculpture Garden. In the Sculpture Garden, a landscape rehabilitation project completed between 1977 and 1981 improved the accessibility and environmental hospitableness of the landscape. Between 1989 and 1993, Smithsonian rehabilitated the Plaza to replace the paving, cover over the original Tunnel entrance, and introduce mostly new plant material. Because both of these projects fell outside the period of significance for this property, the Determination of Eligibility for the Hirshhorn Museum and Sculpture Garden found them to be non-contributing, yet compatible, additions to the property. Therefore, any alterations to these specific elements do not represent an adverse effect unless they also alter the significant contributing features of the Sculpture Garden.

The additional changes proposed to contributing features of the site—including the removal or alteration of portions of the Plaza walls, alteration of the elevation of the Sculpture Garden to create gallery space below, and reopening and alteration of the Tunnel—have the potential to create cumulative adverse effects on this property, and by association on the National Mall Historic District (to which the Hirshhorn is a contributing property). The adverse effects could be viewed as balanced by the cumulative beneficial effects of restoring the Sculpture Garden perimeter walls and rehabilitating the Hirshhorn Museum building. These effects can be further avoided or minimized by designing and implementing these projects to meet historic preservation standards for the treatment of historic properties.



Smithsonian Institution *South Mall Campus Master Plan*

Quadrangle

The Quadrangle is a contributing building to the National Mall Historic District. Under Alternatives D and F, the greater degree of change proposed for above-grade Quadrangle Building features and the Haupt Garden has the potential to generate cumulative adverse effects on this property. These related actions include the replacement of the Quadrangle roof membrane, relocation of the existing loading dock,

removal of the Ripley Pavilion, removal and replacement of the museum pavilions, replacement of the skylights and egress stair enclosures, potential construction of a new Visitor Center entrance near the Castle, and reconfiguration of the Haupt Garden and its associated features—will create a cumulative adverse effect on this property, and by association on the National Mall Historic District.

Alternative F, which maintains the flat grade of the existing Haupt Garden, represents a lesser cumulative effect than Alternative D, which alters the grade by introducing the Visitor Center “dip” entrance to the garden. In both alternatives, the effects of interior illumination from the museum pavilions and skylights has the potential to contribute to the cumulative adverse effect by altering the character and setting of the Mall and contributing buildings in this location.

National Mall Historic District

Under all action alternatives, the greater degree of change proposed for the Haupt Garden, Quadrangle, and Castle has the potential to generate cumulative adverse effects on the historic district, namely the character and setting of the National Mall in this location.

Specifically, this applies to the greater degree of change proposed to contributing buildings within the National Mall and South Mall Campus under Alternatives D and F. These effects will be further assessed at the time of project design. Cumulative effects to individual properties that contribute to the historic district have been described above.

Plan of the City of Washington

No cumulative adverse effects have been identified on the Plan of the City of Washington.



Commission Action

January 4, 2018

PROJECT

South Mall Campus Master Plan
 National Mall between 7th Street, Jefferson Drive, 12th Street, and Independence Avenue, SW
 Washington, DC

NCPC FILE NUMBER

7630

NCPC MAP FILE NUMBER

1.41(05.00)44050

SUBMITTED BY

Smithsonian Institution

APPLICANT'S REQUEST

Approval of comments on concept master plan and draft EIS alternatives

REVIEW AUTHORITY

Advisory
 per 40 U.S.C. § 8722(a) and (b)(1)

ACTION TAKEN

Approved comments on concept master plan and draft EIS alternatives

The Commission:

Supports the goals of the South Mall Campus Master Plan, which address the Smithsonian’s need to meet its long-term space requirements and address physical and operational deficiencies across the campus that impact visitor use and experience as well as the Smithsonian’s ability to effectively and safely implement its programs.

Notes that pursuant to the National Environmental Policy Act, a Draft Environmental Impact Statement was prepared, and public comments are sought on the alternatives and impacts through January 16, 2018. These comments will inform the Commission’s selection of a preferred alternative at the draft master plan review in the spring.

Notes the Master Plan will be implemented over the next 20-30 years; and further, that individual projects contained within the Master Plan will be subject to Commission review and approval at the time when detailed designs are developed.

Requests the Smithsonian Institution prepare a phasing plan to be included in the next draft master plan submission.

Notes a Programmatic Agreement will be prepared pursuant to the National Historic Preservation Act that will describe the process and steps necessary for developing the detailed designs for individual projects at the time of their implementation.

Finds the Master Plan must consider the context of a changing city, particular the SW Ecodistrict and Southwest Waterfront, which will change the character of Independence Avenue and the southern approach to the campus.



Notes that six action alternatives have been developed (A through F). Three alternatives (B, D, and F) have been advanced to the Draft Environmental Impact Statement, in addition to the no action alternative. The Smithsonian Institution, as project owner, has indicated that currently Alternative F best meets their needs.

Finds the action Alternatives (B, D, and F) generally contain a number of common projects, including:

- Renovation and restoration of the Castle;
- Protection of the Castle to address seismic vulnerabilities;
- Removal of the Ripley Pavilion to facilitate views and circulation from the Mall to the center of the campus;
- Consolidation of the Quadrangle and Arts and Industries Building loading areas and parking into a single underground, centralized loading facility to serve the campus;
- Creation of a new underground central utility plant to increase efficiency, sustainability and cost-effectiveness, and help maintain the critical Smithsonian collections;
- Creation of a below-grade visitor center between the Castle and the Quadrangle, and reconfiguration of the Castle basement level as new visitor and interpretive space;
- Addition of a new accessible entrance off the east façade of the Freer Gallery to provide a direct pedestrian connection to the Haupt Garden;
- Retention of the Arts and Industries Building as a flexible space for temporary exhibits and events until such time as a permanent use is identified; and
- Upgrades to underground utilities and perimeter security.

Supports these projects as they help improve visitor service, increase access across the campus, and modernize facilities, while recognizing that program and functionality must be balanced with historic preservation, planning and urban design goals.

Requests the master plan indicate that potential conversion of the Arts and Industries Building into a museum is reasonably foreseeable as a long-term project, regardless of the final occupant; and further, the master plan should describe any implications for such a use.

Regarding the Quadrangle Building and Pavilions:

Notes the Quadrangle Building and pavilions are not eligible for individual listing on the National Register of Historic Places, but are contributing elements to the National Mall Historic District. The Quadrangle Historic District has been identified at the local level.

Finds the current location of the pavilions affects the configuration and functionality of the below-grade Quadrangle interior spaces, as well as views of the Castle from Independence Avenue and 10th Street, SW to the south.

Finds that Alternative B retains the pavilions in their current location, allowing only limited improvement to the functionality of the Quadrangle interior spaces.



Finds that Alternative D and F replace the existing pavilions with smaller pavilions closer to the Castle, allowing for improvements to the functionality of the Quadrangle interior spaces.

Finds that the new pavilion locations would create greater visibility for the Sackler Gallery and National African Art Museum as seen from the National Mall.

Finds that smaller, relocated pavilions could improve views of the Castle and the National Mall from the south, and over time guide visitors from the Southwest Quadrant of the City, including the SW Ecodistrict, the Wharf and Waterfront, which are connected along 10th Street, SW, and are undergoing tremendous growth.

Regarding the Haupt Garden:

Notes the garden forms the roof of the Quadrangle Building and the roof will need to be removed and replaced for maintenance purposes.

Finds the garden provides a view to and setting for the Castle as seen from the south; and further, the intimate character and scale of the existing garden is a beloved component of the South Mall campus, and are an important counterpoint to the scale and openness of the National Mall.

Notes Alternative B would replace the garden in its current configuration and character; Alternative D proposes a large grade change in front of the Castle with a new open configuration and different, park-like character; and Alternative F retains the existing grade and characteristics but reconfigures the garden layout to include two new entrance ramps and skylights.

Does not support the large sloped entry in Alternative D as it would greatly change the character of the garden and the setting of the Castle.

Finds that, while the Master Plan will not include a specific design for the garden, changes in circulation, vertical access and daylighting of the Quadrangle Building will influence the future garden design.

Recommends the design of the future garden balance the desire to maintain a space of intimate character and scale with the need to improve the Quadrangle Building, and desire for greater access and visibility across the campus.

Notes the Smithsonian Institution has publicly committed to maintaining the intimate character and high-quality landscape of the garden as the design is developed.

Regarding the Hirshhorn Museum and Sculpture Garden:

Finds that a modest opening in the western site wall would facilitate pedestrian connections to AIB, while larger alterations of the wall will change the character of the Hirshhorn Museum site.



Supports the reestablishment of the existing below-grade connection between the Museum and Sculpture Garden.

Requests the applicant provide additional details, including sections that describe the proposed expansion of the tunnel and the addition of gallery space below the Sculpture Garden, as shown in Alternatives D and F, so the Commission may better understand the relationship of the proposal to the setting of the National Mall.

Regarding the extent of Castle sub-basement excavation:

Notes that Alternative D includes the greatest amount of excavation beneath the Castle.

Finds the Alternative B and F minimize the amount of sub-basement excavation by accommodating the program elsewhere in the campus.

//Original Signed//

1/5/2018

Julia A. Koster

Date

Secretary to the National Capital Planning Commission



Commission Action

April 5, 2018

PROJECT

South Mall Campus Master Plan
 National Mall, between 7th Street, SW,
 Jefferson Drive, SW, 12th Street, SW, and
 Independence Avenue, SW
 Washington, DC

NCPC FILE NUMBER

7630

NCPC MAP FILE NUMBER

1.41(05.00)44719

SUBMITTED BY

Smithsonian Institution

APPLICANT'S REQUEST

Approval of comments on the draft
 master plan

REVIEW AUTHORITY

Advisory
 per 40 U.S.C. § 8722(a) and (b)(1)

ACTION TAKEN

Approved comments on the draft
 master plan

The Commission:

Supports the goals of the South Mall Campus Master Plan, which address the Smithsonian’s need to meet its long-term space requirements and address physical and operational deficiencies across the campus that impact visitor use and experience as well as the Smithsonian’s ability to effectively and safely implement its programs.

Notes the Master Plan identifies elements and general locations of projects to be implemented over the next 20-30 years; and further, that individual projects contained within the Master Plan, including new pavilions and gardens, will be subject to additional Commission review and approval at the time when detailed designs are developed.

Notes a Programmatic Agreement (PA) will be prepared pursuant to the National Historic Preservation Act that will describe the process and steps necessary for developing the detailed designs for individual projects at the time of their implementation. The process will take into account and avoid, minimize and mitigate adverse effects.

Finds the Master Plan must consider the context of a changing city, particularly the SW Ecodistrict and Southwest Waterfront, which will change the character of Independence Avenue and the southern approach to the campus.

Supports the projects identified in the master plan as they help improve visitor service, increase access across the campus, and modernize facilities, while recognizing that program and functionality must be balanced with historic preservation, planning and urban design goals.

Finds the South Mall campus provides an important physical and cultural link between the Smithsonian Institution, the National Mall and Southwest Washington, DC; and further, this connection will be strengthened with the implementation of the master plan and continued coordination and collaboration among all stakeholders.



Notes that pursuant to the National Environmental Policy Act, a Draft Environmental Impact Statement was prepared and public comments were received regarding the proposed alternatives and their impacts.

Notes the Smithsonian Institution developed a number of alternatives in response to comments and feedback received throughout the planning process:

- Alternative D was the first alternative created and included the most dramatic changes to the campus, and would change the character of the garden, the setting of the Castle and maximize excavation under the Castle.
- Alternative B included more minimal changes to the campus, but it did not best achieve the goals of the Smithsonian.
- Alternative F was then developed to balance changes to the campus with the need to meet the master plan goals. Alternative F retains the character of the gardens, reduces excavation under the Castle and maintains its setting.

Supports the Smithsonian Institution's preferred Alternative F as the basis of the campus master plan and the preferred alternative to be identified in the Final Environmental Impact Statement.

Supports the use of design guidelines to help inform the design of individual projects at the time of their development, in conjunction with the Section 106 consultation process and further input from the Commission, staff and other agencies.

Regarding the Smithsonian Castle:

Supports the restoration of the Castle to its period of significance.

Finds the Castle is the physical and symbolic center of the Smithsonian Institution as well as the South Mall Campus, and therefore is the more appropriate location for a centralized visitor center.

Finds the relocation of a number of support facilities for the visitor center to an adjacent below-grade space will allow for the restoration of the Castle, including the Great Hall, to its period of significance while improving the visitor experience.

Notes the Castle and visitor center spaces will have a direct connection to the Sackler Gallery and National African Art Museum.

Regarding the Arts and Industries Building

Notes the Arts and Industries Building is a National Historic Landmark that is recognized for its architectural style and role in initiating one of the greatest museum complexes in the world.

Supports the restoration of the Arts and Industries Building to its period of significance, including removing non-historic walls and other contemporary interventions, to allow the building to return to its original grandeur and use as an exhibition hall with voluminous spaces and a clear expression of structure when a full revitalization is undertaken.



Finds the Smithsonian Institution has a need for large-scale event and exhibition space that does not exist elsewhere on the campus, and further the Arts and Industries Building can provide that space in a way that is consistent with its historic use and character.

Finds adding a visitor center and related uses into the building would require adding new walls, rooms and other elements that would be inconsistent with the goals of the building restoration.

Notes the Smithsonian Institution has completed a building shell revitalization, and is actively fundraising for additional interior renovations to enable the building's reopening as an exhibition hall in the near future.

Notes the Smithsonian has hired a full-time director with a goal of creating year-round programming available to the public.

Regarding the Quadrangle Building:

Supports improvements to the Quadrangle Building, including increased public access, expanded amenities and programming, and improved daylighting, that will enhance the visitor experience and help the Smithsonian Institution meet its needs.

Finds the relocation of the pavilions will help improve the functionality of the below-grade Quadrangle Building spaces, and notes the new facilities and improved spaces will help provide additional programming, events and educational opportunities for residents and visitors.

Notes that the exact location, size and design of new pavilions will be determined at the individual project stage, in consultation with the relevant agencies and consulting parties through the Section 106 process.

Finds the relocation of the pavilions opens up the Haupt Gardens, the Smithsonian Castle, and the National Mall to Independence Avenue and the rapidly evolving southwest neighborhood.

Finds that the relocated pavilions and addition of large-scale ramps to a lower level could alter the setting of the Castle and the Arts and Industries Building and may have undesirable effects on these two National Historic Landmarks.

Recommends that at the time of individual project design, the Smithsonian evaluate the size and scale of any proposed ramps or stairs to help minimize their impact on the setting of the Castle while balancing circulation and access needs. SI will further engage the relevant review agencies and consulting parties through the Section 106 process.

Regarding the Haupt Garden:

Notes the garden is the roof to the Quadrangle Building and the 30-year old roof membrane under the garden is at the end of its useful life and must be replaced.



Finds the garden provides a view to and setting for the Castle as seen from the south; and further, the intimate character and scale of the existing garden is a beloved component of the South Mall campus, and are an important counterpoint to the scale and openness of the National Mall.

Notes the garden design has evolved over time and will continue to be altered to respond to changes in aesthetics, functionality, and climate.

Notes the Smithsonian has committed to retaining the parterre, although the exact design and layout of the remainder of the garden will be determined at the individual project stage, and further, the Smithsonian has committed to maintain the high quality landscape of the garden, along with its intimate character.

Requests the Smithsonian Institution consider opportunities to reuse existing garden elements, where appropriate, to provide a link between the history of the garden and its future iterations

Requests the Smithsonian Institution evaluate opportunities to save, store and replant trees and other plantings after construction has been completed.

Requests the gardens continue to accommodate a variety of native plants as well as those that will help support pollinator health.

Requests that at the time of garden design, tree replacement should prevent net loss of tree canopy in accordance with the policies set forth in the *Comprehensive Plan for the National Capital*.

Regarding the Hirshhorn Museum and Sculpture Garden:

Supports restoration of the museum and only a limited open in the perimeter wall surrounding the site to provide a direct pedestrian connection to the Arts and Industries Building.

Supports restoration the below-grade tunnel connection between the museum and sculpture garden.

Notes that the Smithsonian Institution may seek to alter the sculpture garden response to contemporary needs related to the function and display of art.

Requests that future project submissions for the sculpture garden should describe the proposed program needs, the existing and proposed functionality of the space, and how the project might affect the garden’s original design intent.

//Original Signed//

04/05/2018

 Julia A. Koster
 Secretary to the National Capital Planning Commission

 Date



Smithsonian Institution
South Mall Campus Master Plan

Exhibit G – Comments from the Commission of Fine Arts

U. S. COMMISSION OF FINE ARTS

ESTABLISHED BY CONGRESS 17 MAY 1910

401 F STREET NW SUITE 512 WASHINGTON DC 20001-2728 202-504-2200 FAX 202-504-2195 WWW.CFA.GOV

26 April 2018

Dear Mr. Horvath:

In its meeting of 19 April, the Commission of Fine Arts reviewed the proposed South Campus Master Plan for the properties of the Smithsonian Institution on the south side of the National Mall between 7th and 12th Streets, SW. The Commission approved the master plan as a basis for proceeding with the design of the plan's components, and provided the following comments.

The Commission members thanked the project team for the concise summary and the clear presentation responding to their previous concerns, and they acknowledged both the complexity of the undertaking and the potential benefits of improving many aspects of the Smithsonian's operations, including circulation, visibility, and visitor experience. They expressed overall support for the project, which now proposes new programming for the Arts & Industries Building and less excavation under the Castle; however, they noted the challenges to be faced in future design phases, such as accommodating the new truck access and loading facility, and the potential reconfiguration of access to the Arthur M. Sackler Gallery and the National Museum of African Art beneath the Quadrangle. Citing the sightline studies presented, they agreed that the plan to relocate the entrances to the underground museums to new portals farther north would open up views toward the historic museum buildings and create more street presence for the Enid A. Haupt Garden—transforming this area into a vital connection point between the National Mall and the adjacent Southwest Ecodistrict. They suggested that the designs for the new entrance pavilions could be informed by the collections and programs of the museums they would serve.

For the development of the design of the Haupt Garden, they expressed support for the general landscape plan, which would allow for the creation of a new garden imbued with important design characteristics derived from the existing one—such as intimacy and shade—as an alternative to a previously presented plan to construct a smaller, compromised parterre in place of the one to be demolished. They said that the revised plan presents an opportunity to create an innovative garden design expressive of the Smithsonian's mission to educate the public, revealing the layers of a living landscape planted on the rooftop of the renovated underground museum complex. They also suggested informing the future landscape design with the philosophy and legacy of Enid A. Haupt, one of the country's great horticultural patrons; this could include devising inventive and sustainable methods to adapt the landscape to climate change.

The Commission looks forward to reviewing submissions for each of the component projects of this master plan as designs for the architecture and landscape are developed.

Sincerely,

Thomas E. Luebke, FAIA
Secretary

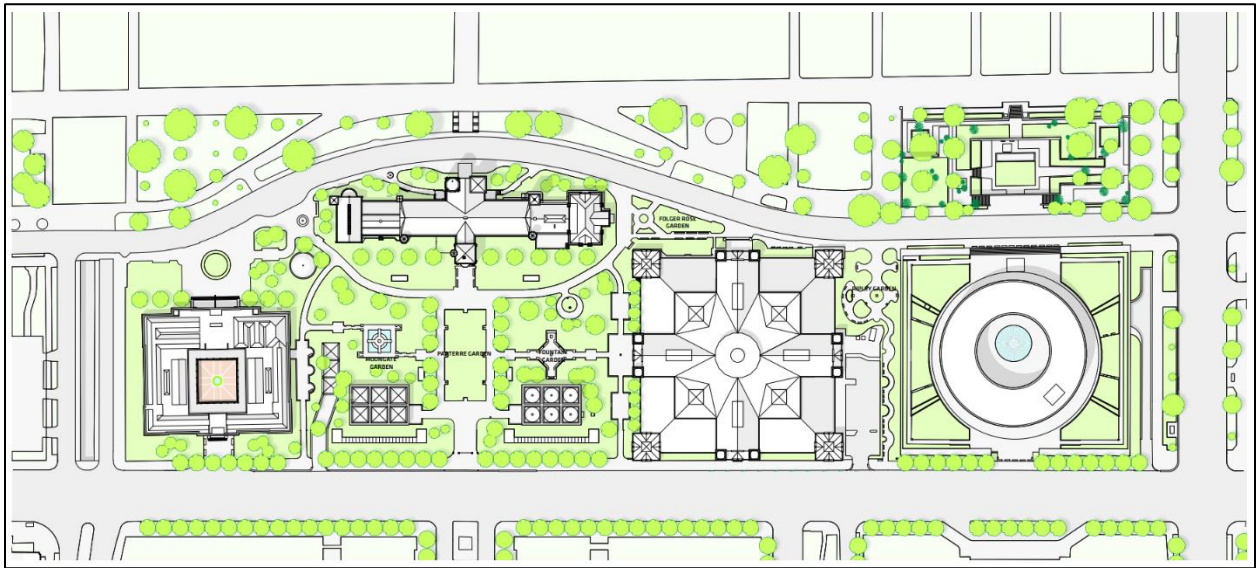
Albert Horvath
Under Secretary for Finance and Administration & Chief Financial Officer
Smithsonian Institution
P.O. Box 37012
Washington, DC 20013-7012

cc: Aran Coakley, Bjarke Ingels Group
Marcel Acosta, National Capital Planning Commission

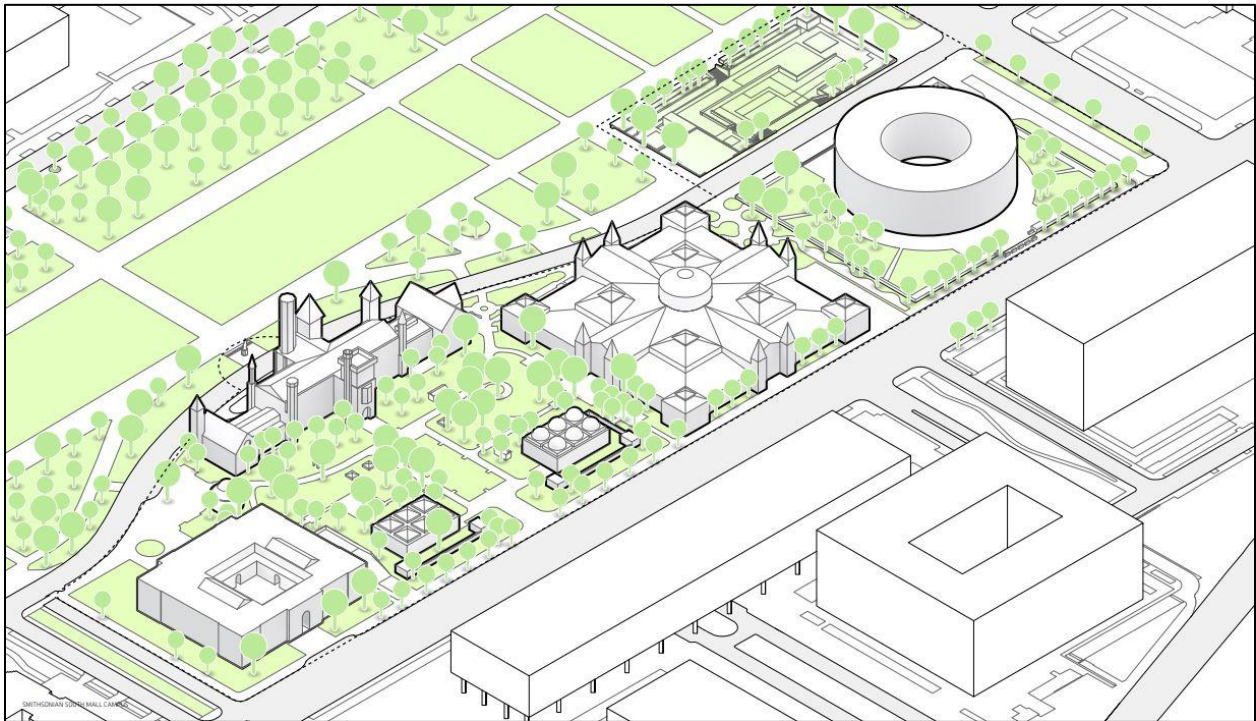


Exhibit H – South Mall Campus Master Plan Alternative F

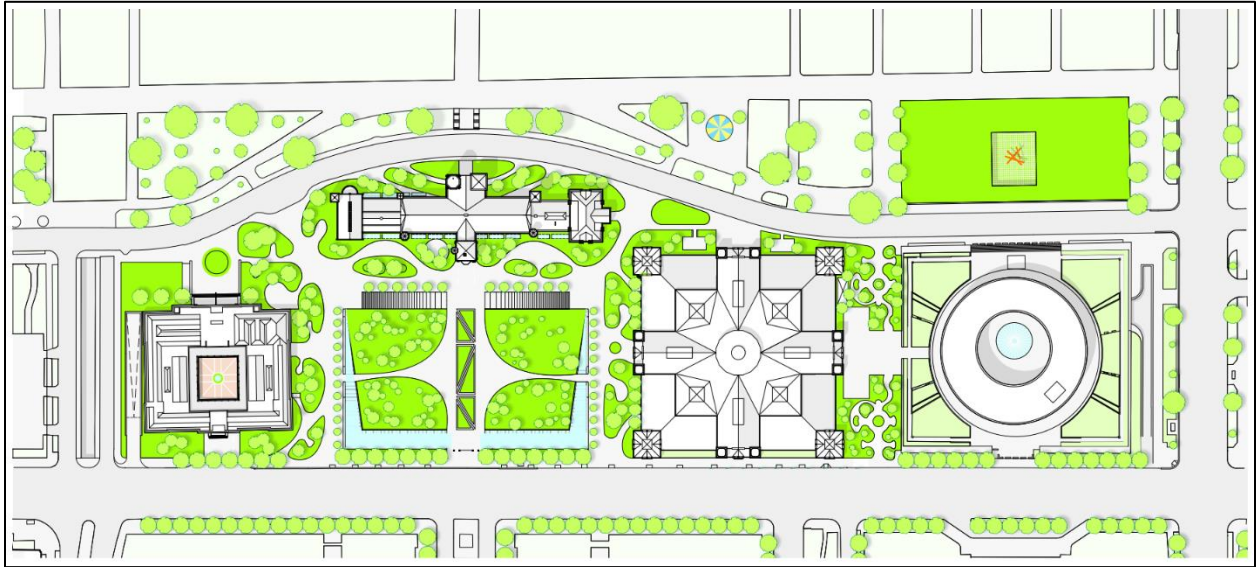
All images created by the Bjarke Ingels Group and SurfaceDesign.



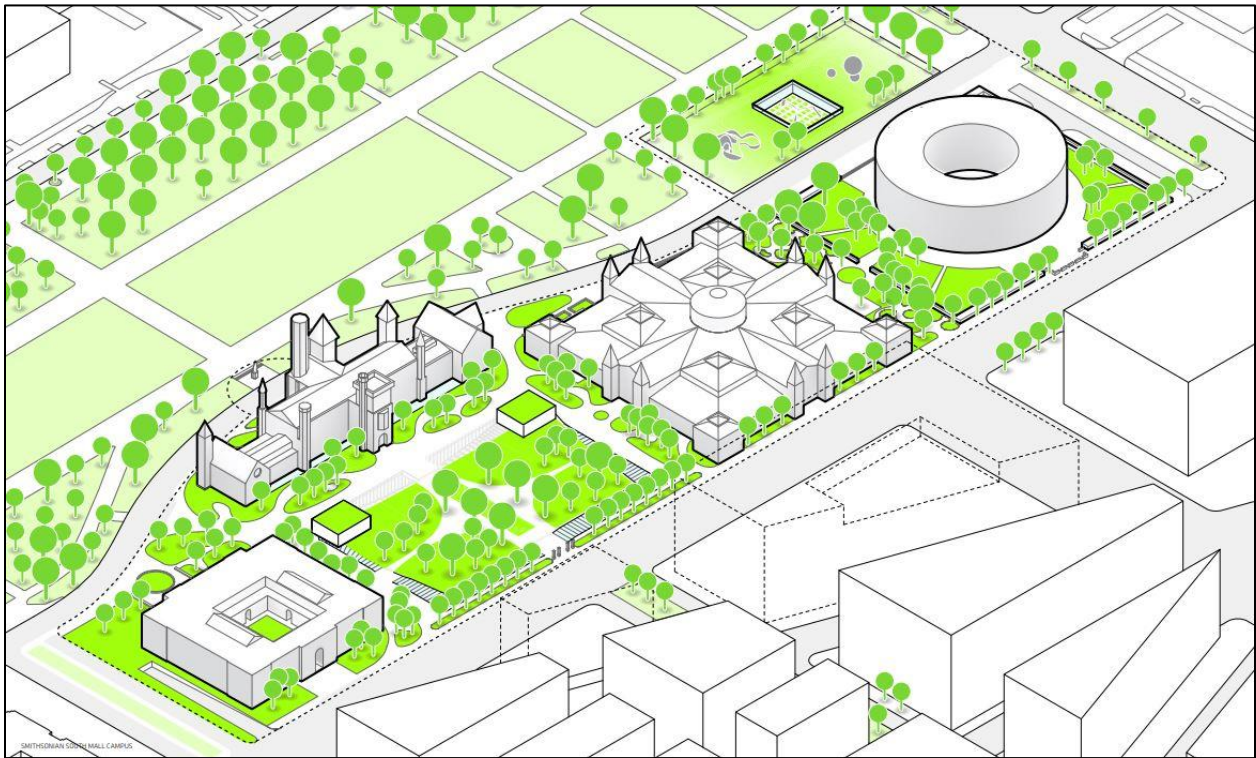
Existing Site Plan.



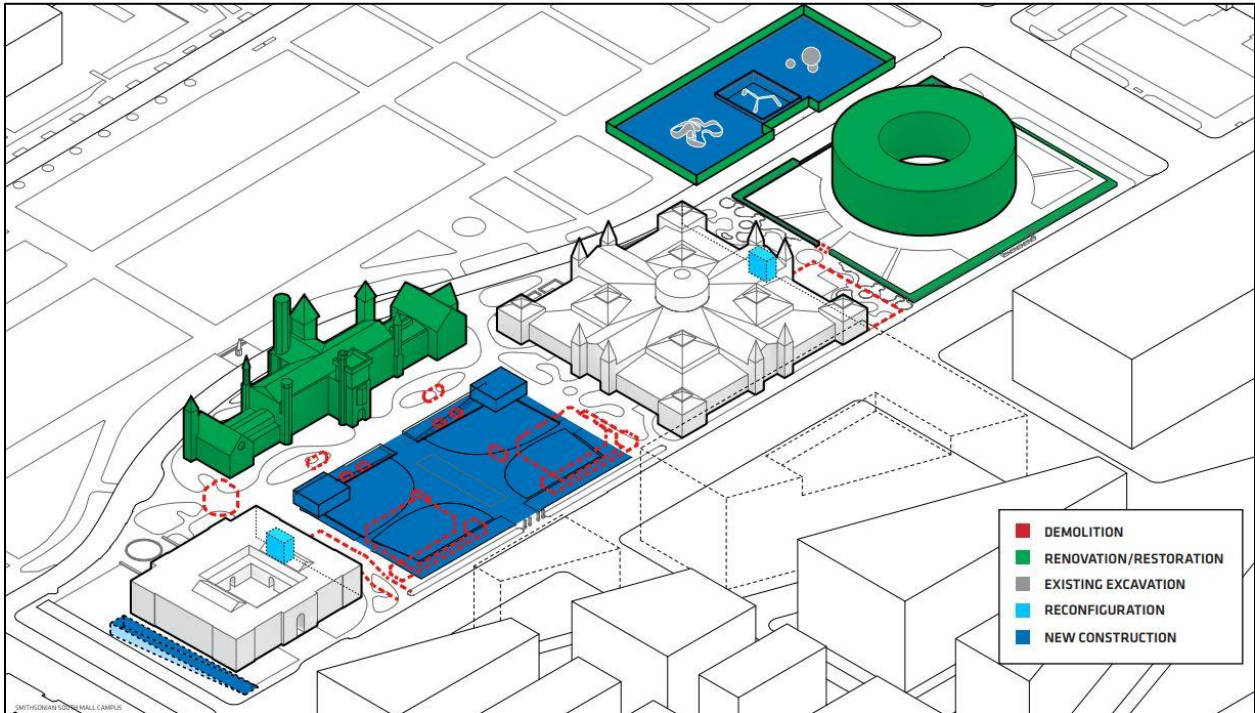
Existing Site, Axonometric View.



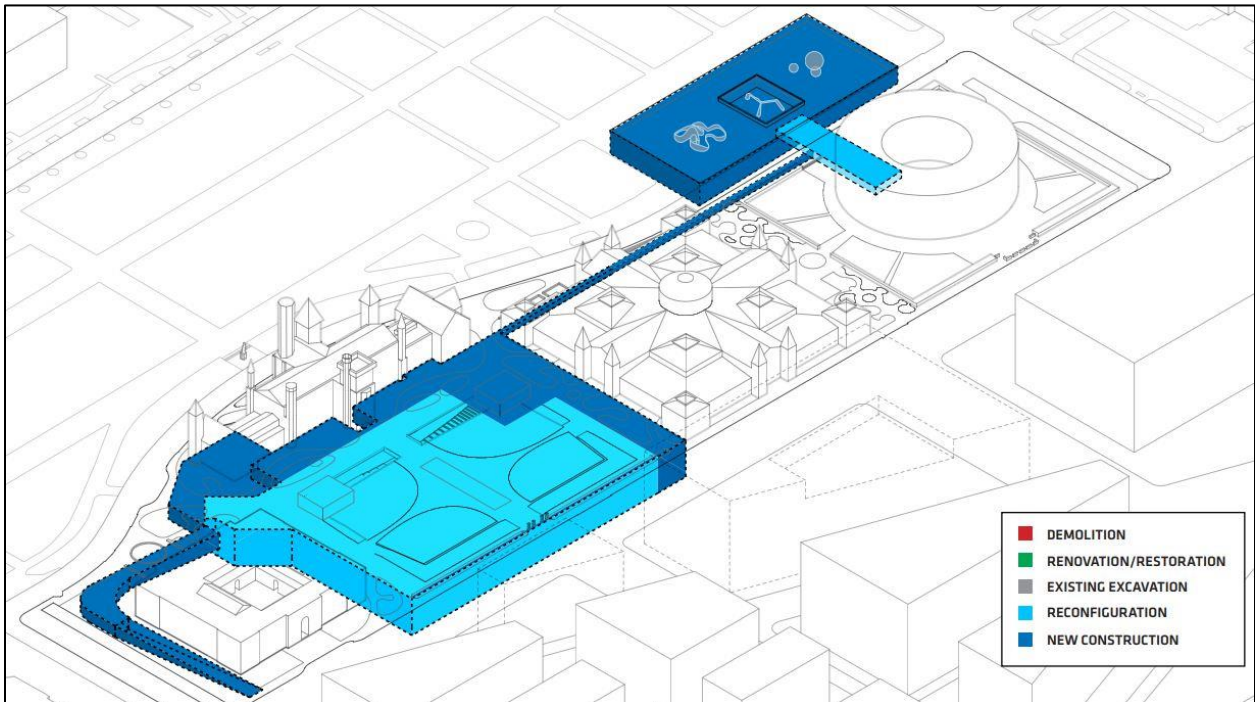
Proposed Site Plan.



Proposed Site Plan, Axonometric View.



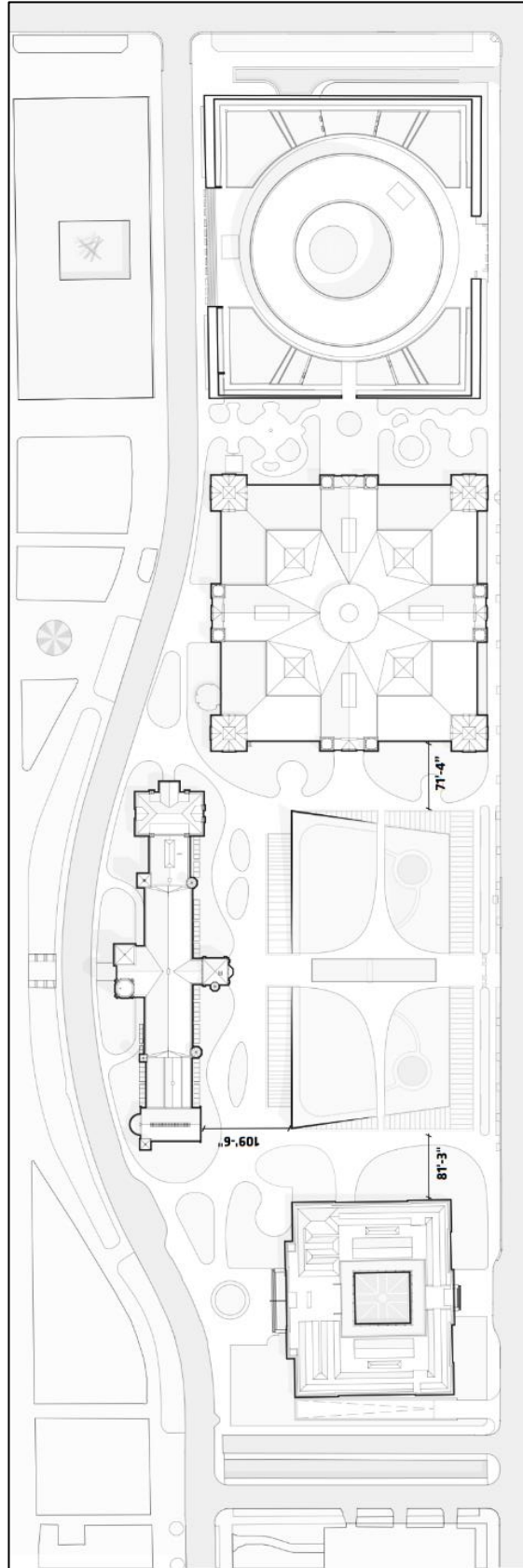
Above-grade Scope of Work.



Below-grade Scope of Work.



Smithsonian Institution
South Mall Campus Master Plan



Distances between the new Quadrangle Pavilions and adjacent historic buildings.



Smithsonian Institution
South Mall Campus Master Plan



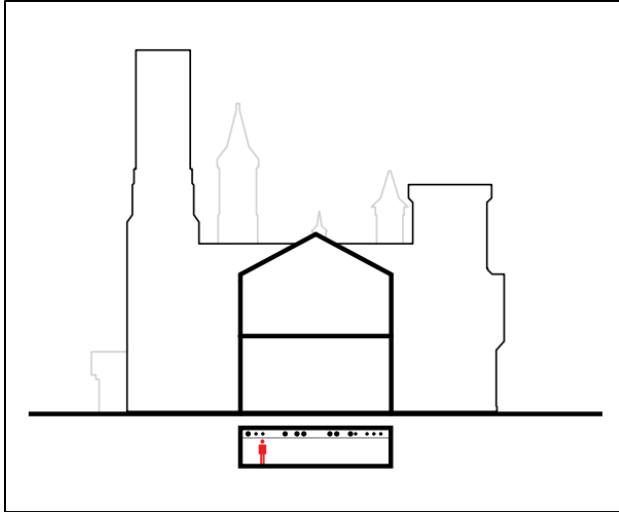
Existing view looking northeast on Independence Avenue.



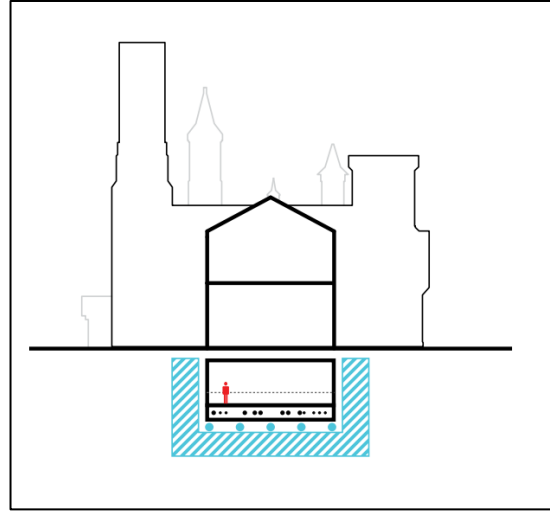
Rendered view looking northeast on Independence Avenue.



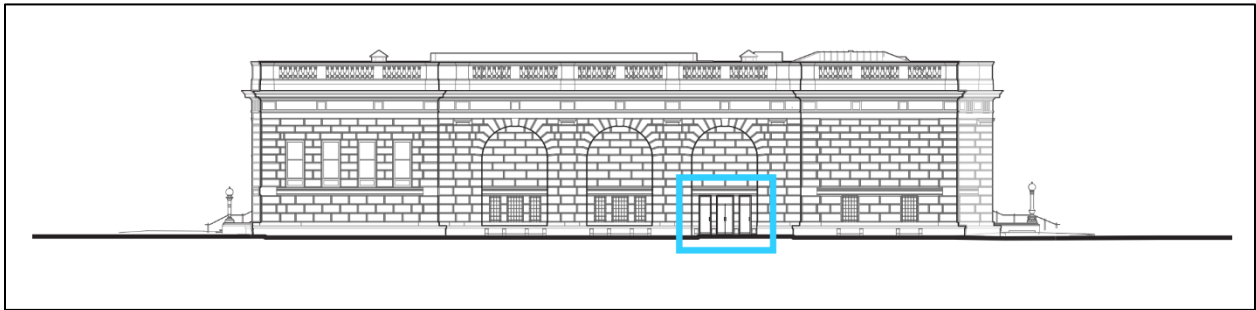
Smithsonian Institution
South Mall Campus Master Plan



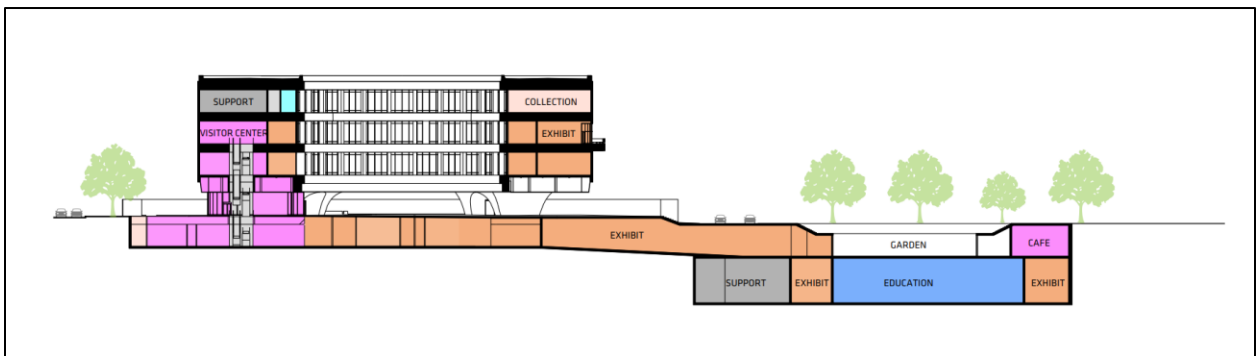
Existing Castle Basement Level.
In the proposed condition, the blue shading and dots indicate seismic protection upgrades.



Proposed Castle Basement Level.
In the proposed condition, the blue shading and dots indicate seismic protection upgrades.



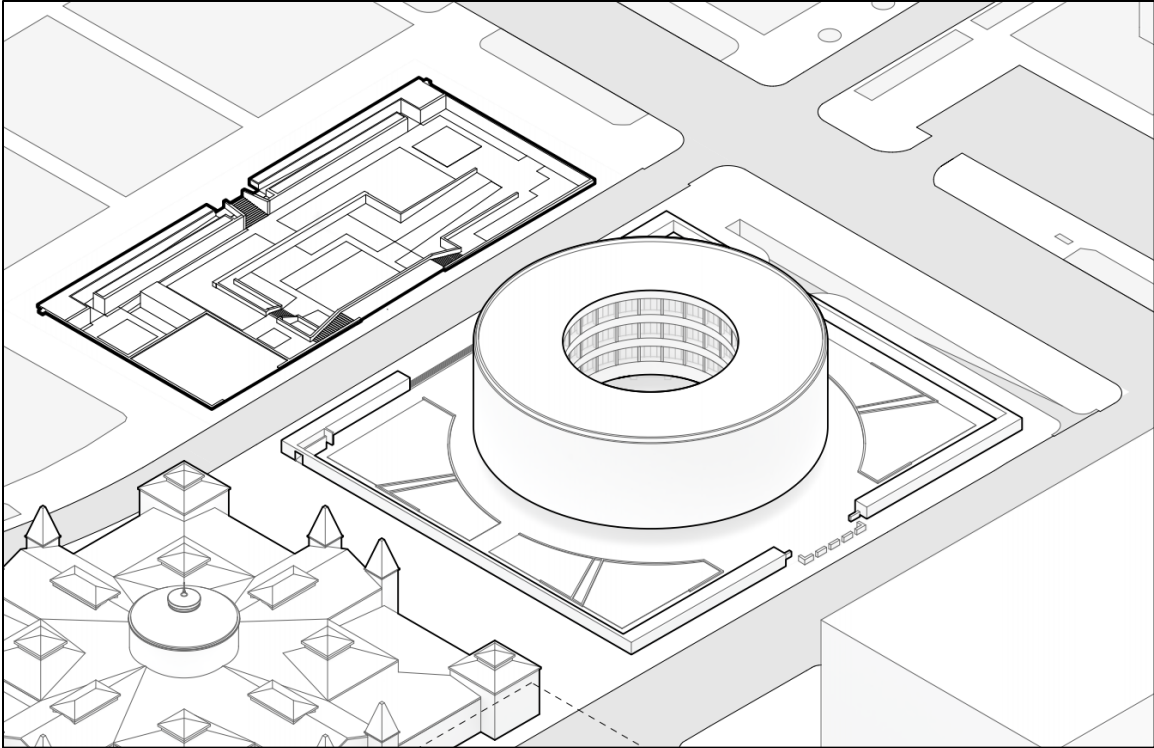
Proposed accessible entrance on the east elevation of the Freer Gallery.



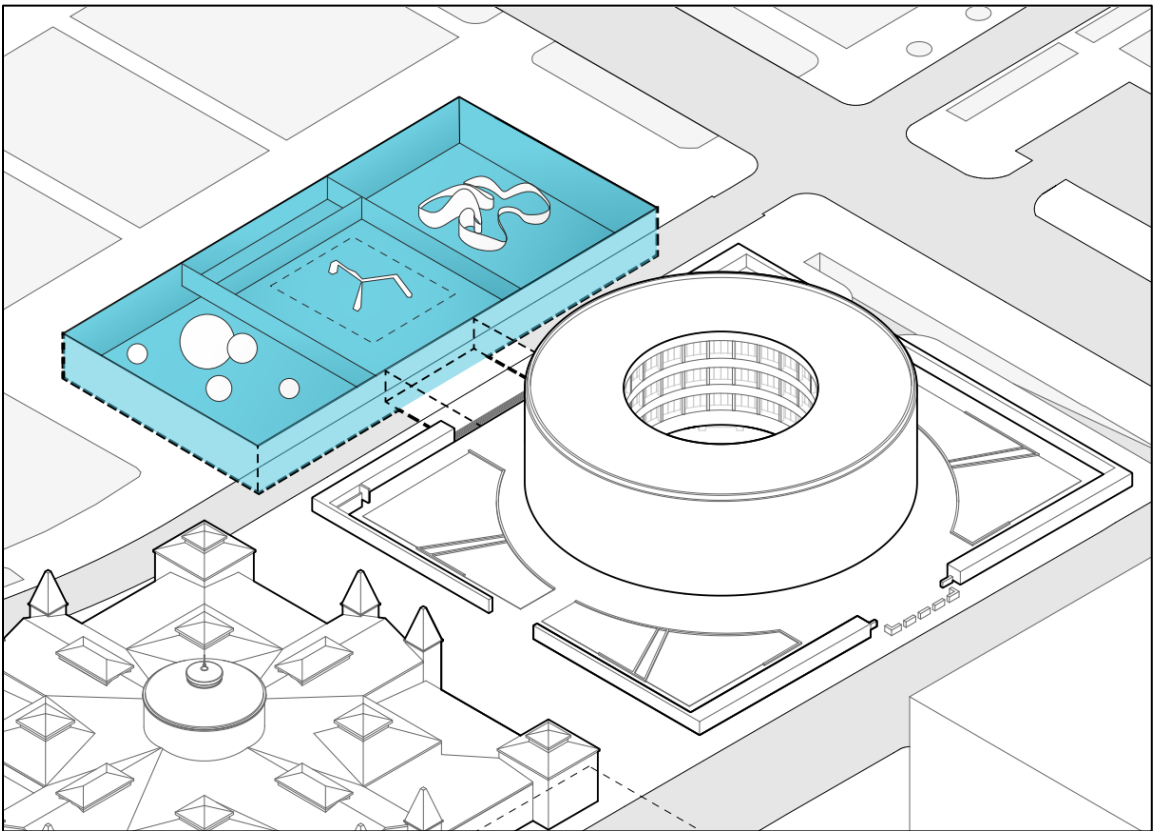
Proposed Hirshhorn Museum and Sculpture Garden section.



Smithsonian Institution
South Mall Campus Master Plan



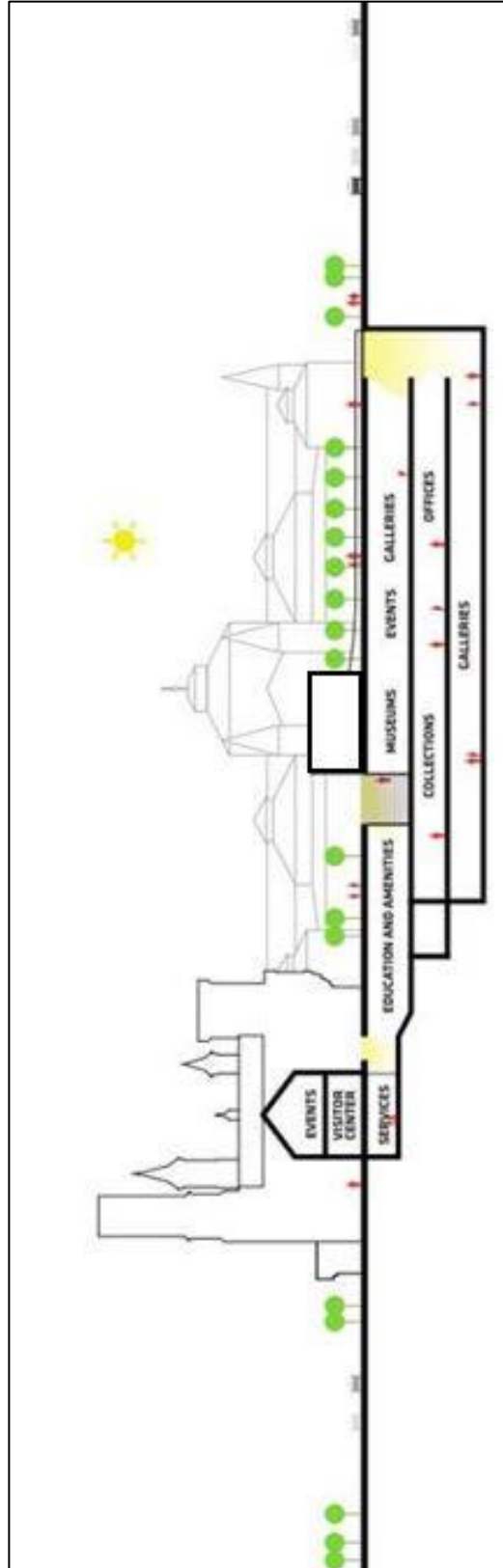
Existing Hirshhorn Museum and Sculpture Garden, Axonometric View.



Proposed Hirshhorn Plaza wall opening, Tunnel expansion, and below-grade Sculpture Garden expansion.



Smithsonian Institution
South Mall Campus Master Plan



Proposed north-south section, illustrating the Castle Visitor Center, connection to the Quadrangle Building, and reconfiguration of the Quadrangle programming.



Smithsonian Institution South Mall Campus Master Plan

Exhibit I – Design and Construction Phasing

The phasing of the South Mall Master Plan will prioritize the Castle Revitalization, urgently needed repairs at the Hirshhorn, and campus infrastructure projects. The infrastructure projects include the central utility plant and the consolidated loading facility, which provide the support for subsequent campus construction projects. The Arts and Industries Building may play a role in accommodating temporarily displaced programs. The Quadrangle and Hirshhorn renovations and the AIB revitalization will take place after new services are in place and as funding becomes available.

